



# CUBIK

The Enclosure Company

# SWITCHBOARD ACCESSORIES



# CONTENTS

Page No

## 01. CONTROL COMPONENTS

1.1	PANEL INDICATORS	00 - 00
1.2	PUSH BUTTONS	00 - 00
1.3	SELECTOR SWITCHES	00 - 00
1.4	CONTACT BLOCKS	00 - 00
1.5	PANEL METERS	00 - 00
1.6	MULTIFUNCTION METERS	00 - 00
1.7	CURRENT TRANSFORMERS	00 - 00
1.8	CONTROL TRANSFORMERS	00 - 00
1.9	ROTARY SWITCHES	00 - 00
1.10	PHASE FAILURE RELAY	00 - 00
1.11	TIMERS	00 - 00
1.12	RELAYS	00 - 00
1.13	FUSES	00 - 00
1.14	SURGE VOLTAGE ARRESTORS	00 - 00
1.15	ENERGY METERS	00 - 00
1.16	POWER SUPPLY	00 - 00
1.17	PROCESS CONTROL DEVICES	00 - 00

## 02. WIRING ACCESSORIES

2.1	CABLE TIES	01 - 03
2.2	CABLE LUGS	04 - 07
2.3	CABLE FERRULS	08
2.4	CABLE TERMINALS	09 - 24
2.5	VYNIL WIRE END CAPS	25 - 29
2.6	DIN RAILS	30
2.7	DIN RAIL TERMINALS	31 - 33
2.8	SLOTTED WIRING DUCTS	34
2.9	HEAT SHRINKABLE SLEEVES	35 - 36
2.10	HEAT SHRINKABLE TUBES	37 - 41
2.11	SPIRAL WRAPPING BANDS	42
2.12	CABLE GLANDS	43 - 49
2.13	EARTH & NEUTRAL LINKS	50
2.14	BUSBARD HOLDERS	51 - 53
2.15	COMB BUSBARS	54
2.16	FLEXIBLE CONDUITS	55 - 57
2.17	GROMMENT	58 - 59
2.18	MOVABLE BUSHING	60 - 61
2.19	WIRING CONNECTORS	62 - 70

### 03. TOOLS & TESTERS

3.1	HYDRAULIC CRIMPING TOOLS	00 - 00
3.2	MECHANICAL CRIMPING TOOLS	00 - 00
3.3	CABLE CUTTERS	00 - 00
3.4	TESTERS	00 - 00
3.5	ELECTRICAL TOOLS	00

### 04. MARKING & LABELING

4.1	LETTERING MACHINE & CONSUMABLES	00 - 00
4.2	ENGRAVING TAGS	00 - 00
4.3	CABLE MARKERS	00 - 00
4.4	MARKER PLATES	00 - 00
4.5	LEGEND PLATES	00 - 00
4.6	MARKER BOX	00 - 00



Cable ties are used to tie cables and it will help to manage the cables in electrical, telecommunication, data & many other installations.

Available various type of cable ties for indoor & outdoor (UV resistance) installations.

Stainless Steel cable ties are available for specific requirements.



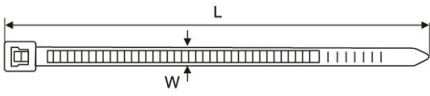
## Ordering Information

Order No	Model No	Product	Length in Inch (L)	Width mm (W)	Bundle Diameter mm	Tensile Strength LBS	Tensile Strength KGS
201 102	HT-100 - 2.5	Cable Ties - White	4"	2.5	2 - 22	18	8
201 104	HT-150 - 2.5	Cable Ties - White	6"	2.5	2 - 35	18	8
201 106	HT-200 - 2.5	Cable Ties - White	8"	2.5	3 - 50	18	8
201 111	HT-150 - 3.6	Cable Ties - White	6"	3.6	3 - 35	40	18
201 122	HT-200 - 4.8	Cable Ties - White	8"	4.8	3 - 50	50	22
201 123	HT-250 - 4.8	Cable Ties - White	10"	4.8	3 - 65	50	22
201 124	HT-300 - 4.8	Cable Ties - White	12"	4.8	3 - 80	50	22
201 134	HT-350 - 7.2	Cable Ties - White	14"	7.2	4 - 90	120	55
201 137	HT-400 - 7.2	Cable Ties - White	16"	7.2	4 - 105	120	55
201 138	HT-450 - 7.2	Cable Ties - White	18"	7.2	4 - 110	120	55
201 139	HT-500 - 7.2	Cable Ties - White	20"	7.2	4 - 150	120	55
201 202	HT-100 - 2.5	Cable Ties - Black	4"	2.5	2 - 22	18	8
201 204	HT-150 - 2.5	Cable Ties - Black	6"	2.5	2 - 35	18	8
201 206	HT-200 - 2.5	Cable Ties - Black	8"	2.5	3 - 50	18	8
201 211	HT-150 - 3.6	Cable Ties - Black	6"	3.6	3 - 35	40	18
201 222	HT-200 - 4.8	Cable Ties - Black	8"	4.8	3 - 50	50	22
201 223	HT-250 - 4.8	Cable Ties - Black	10"	4.8	3 - 65	50	22
201 224	HT-300 - 4.8	Cable Ties - Black	12"	4.8	3 - 80	50	22

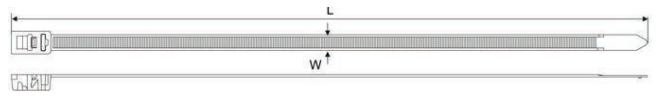
201 234	HT-350 - 7.2	Cable Ties - Black	14"	7.2	4 - 90	120	55
201 237	HT-400 - 7.2	Cable Ties - Black	16"	7.2	4 - 105	120	55
201 238	HT-450 - 7.2	Cable Ties - Black	18"	7.2	4 - 110	120	55
201 239	HT-500 - 7.2	Cable Ties - Black	20"	7.2	4 - 150	120	55
201 300	HT - 150RT	Releasible Cable tie - White	6"	2.5	2 - 35	18	8
201 305	HT - 200RT	Releasible Cable tie - White	8"	4.8	3 - 50	50	22
201 315	HT - 280RT	Releasible Cable tie - White	11"	4.8	3 - 70	50	22
201 350	HT - 100RT	Marker ties - White	4"	2.5	2 - 22	18	8
201 355	HT - 200RT	Marker ties - White	8"	2.5	3 - 50	18	8
201 360	HT - 200B	Velcro Cable Tie -Black	8"	12	5 - 40	18	8
201 603	HT - 250SS	Stainless Steel Cable Ties with Buckles	10"	4.6	63	135	23
201 604	HT - 300SS	Stainless Steel Cable Ties with Buckles	12"	4.6	76	135	23
201 624	HT - 350SS	Stainless Steel Cable Ties with Buckles	14"	7.6	89	135	23
201 626	HT - 450SS	Stainless Steel Cable Ties with Buckles	18"	7.6	115	135	23
201 627	HT - 500SS	Stainless Steel Cable Ties with Buckles	20"	7.6	128	135	23
201 629	HT - 600SS	Stainless Steel Cable Ties with Buckles	24"	7.6	154	135	23

## Technical Details

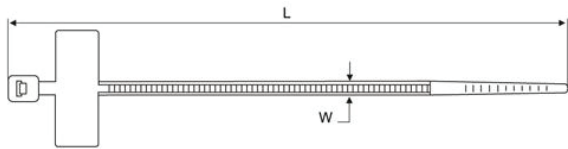
Cable Ties



Releasable Cable Ties



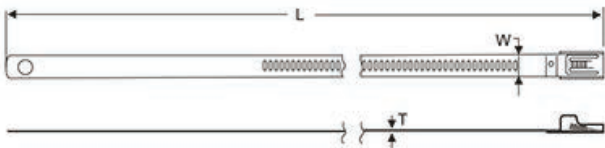
Marker Ties



Velcro Cable Ties



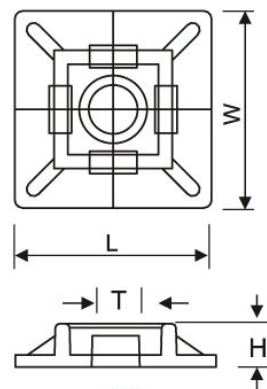
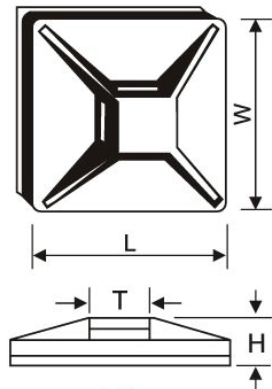
Stainless Steel Cable Ties



## Ordering Information

Order No	Model No	Product	Size mm W x L	H	T	CM
201 375	HT - 20	Self Adhesive Cable Mount Bases	20 x 20	6.1	5.0	52x35x36
201 385	HT - 30	Self Adhesive Cable Mount Bases	30 x 30	8.7	6.4	54x33x32
201 390	HT - 40	Self Adhesive Cable Mount Bases	40 x 40	6.4	10.8	54x33x32

## Technical Details





Copper cable lugs are manufactured from soft drawn, pure, high conductivity copper tubes conforming to BS standards.

Bi-metallic cable lugs are manufactured from copper & aluminum tubes as per BS 7609.

All cable lugs are fully annealed to ensure the electrical & mechanical strength.

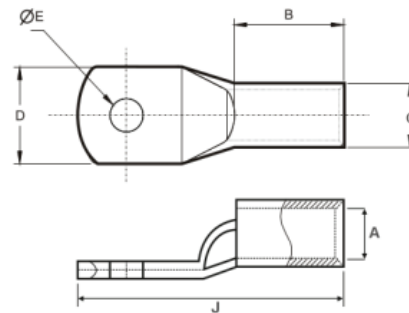


## Ordering Information

Order No	Model No	Product	Cable Size Cross Sec mm <sup>2</sup>	Hole Size Diameter mm	Current Capacity A
218102	HT 1.5 - 6	Cable Lugs	1.5	6	32
218107	HT 2.5 - 6	Cable Lugs	2.5	6	32
218112	HT 4 - 6	Cable Lugs	4	6	40
218116	HT 6 - 6	Cable Lugs	6	6	50
218117	HT 6 - 8	Cable Lugs	6	8	50
218120	HT 10 - 6	Cable Lugs	10	6	70
218121	HT 10 - 8	Cable Lugs	10	8	70
218125	HT 16 - 6	Cable Lugs	16	6	95
218126	HT 16 - 8	Cable Lugs	16	8	95
218131	HT 25 - 6	Cable Lugs	25	6	130
218132	HT 25 - 8	Cable Lugs	25	8	130
218133	HT 25 - 10	Cable Lugs	25	10	130
218135	HT 35 - 6	Cable Lugs	35	6	150
218136	HT 35 - 8	Cable Lugs	35	8	150
218137	HT 35 - 10	Cable Lugs	35	10	150
218140	HT 50 - 8	Cable Lugs	50	8	185
218141	HT 50 - 10	Cable Lugs	50	10	185
218142	HT 50 - 12	Cable Lugs	50	12	185
218145	HT 70 - 8	Cable Lugs	70	8	220
218146	HT 70 - 10	Cable Lugs	70	10	220
218147	HT 70 - 12	Cable Lugs	70	12	220
218150	HT 95 - 10	Cable Lugs	95	10	225
218151	HT 95 - 12	Cable Lugs	95	12	225

218155	HT 120 - 12	Cable Lugs	120	12	280
218156	HT 120 - 14	Cable Lugs	120	14	280
218157	HT 120 - 16	Cable Lugs	120	16	280
218160	HT 150 - 12	Cable Lugs	120	12	325
218161	HT 150 - 14	Cable Lugs	150	14	325
218162	HT 150 - 16	Cable Lugs	150	16	325
218165	HT 185 - 12	Cable Lugs	150	12	360
218166	HT 185 - 14	Cable Lugs	185	14	360
218167	HT 185 - 16	Cable Lugs	185	16	360
218170	HT 240 - 12	Cable Lugs	240	12	400
218171	HT 240 - 14	Cable Lugs	240	14	400
218172	HT 240 - 16	Cable Lugs	240	16	400
218175	HT 300 - 12	Cable Lugs	300	12	440
218176	HT 300 - 14	Cable Lugs	300	14	440
218180	HT 400 - 14	Cable Lugs	400	14	465
218181	HT 400 - 16	Cable Lugs	400	16	465
218183	HT 500 - 14	Cable Lugs	500	14	550
218184	HT 500 - 16	Cable Lugs	500	16	550
218187	HT 630 - 16	Cable Lugs	630	16	595

## Technical Details





Cable mm <sup>2</sup>	Stud Hole E	Dimension							Product Code
		A	C	D	G	H	B	J	
1.5	6.5	1.8	3.7	10	4	6	6	18	HT 1.5 - 6
2.5	6.5	2.4	4	10	5	6	8	21	HT2.5 - 6
4	6.5	3.1	4.8	10	5	6	8	21	HT4 - 6
6	6.5	3.8	5.5	10	5	6	10	24	HT6 - 6
	8.4	3.8	5.5	12	6	9	10	28	HT6 - 8
10	6.5	4.5	6.2	11	6	7	10	26	HT 10 - 6
	8.4	4.5	6.2	12	6	9	10	28	HT 10 - 8
16	6.5	5.4	7.1	12	7	7	12	30	HT 16 - 6
	8.4	5.4	7.1	12	7	7	12	30	HT 16 - 8
25	6.5	6.8	8.8	13	7	7	12	30	HT 25 - 6
	8.4	6.8	8.8	13	7	7	12	30	HT 25 - 8
	10.5	6.8	8.8	15	10	11	13	38	HT25 - 10
35	6.5	8.2	10.6	16	9	9	13.5	37	HT 35 - 6
	8.4	8.2	10.6	16	9	9	13.5	37	HT 35 - 8
	10.5	8.2	10.6	16	9	9	13.5	37	HT 35 - 10
50	8.4	9.5	12.4	18	9	10	17	42	HT 50 - 8
	10.5	9.5	12.4	18	9	10	17	42	HT 50 - 10
	13	9.5	12.4	20	10	12	17	45	HT 50 - 12
70	8.4	11.3	14.6	21	11	11	18.5	47	HT 70 - 8
	10.5	11.3	14.6	21	11	11	18.5	47	HT 70 - 10
	13	11.3	14.6	21	11	11	18.5	47	HT 70 - 12
95	10.5	13.5	17.4	25	12	13	21	53	HT 95 - 10
	13	13.5	17.4	25	12	13	21	53	HT 95 - 12
120	13	15	19.4	28	13	14	23	60	HT120 - 12
	14.5	15	19.4	28	13	14	23	60	HT120 - 14
	17	15	19.4	28	16	16	23	64	HT 120 - 16
150	13	16.5	21.2	30	16	16	27	70	HT 150 - 12
	14.5	16.5	21.2	30	16	16	27	70	HT 150 - 14
	17	16.5	21.2	30	16	16	27	70	HT 150 - 16
185	13	18.5	23.5	34	17	19	32	80	HT 185 - 12
	14.5	18.5	23.5	34	17	19	32	80	HT 185 - 14
	17	18.5	23.5	34	17	19	32	80	HT 185 - 16
240	13	21	26.5	38	20	20	37	94	HT 240 - 12
	14.5	21	26.5	38	20	20	37	94	HT 240 - 14
	17	21	26.5	38	20	20	37	94	HT 240 - 16
300	13	23.5	30	43	22	22	42	102	HT 300 - 12
	14.5	23.5	30	43	22	22	42	102	HT 300 - 14
400	14.5	28.5	36.5	52.5	26	26	44	114	HT 400 - 14
	17	28.5	36.5	52.5	26	26	44	114	HT 400 - 16
500	17	30	39	56	28	28	48	121	HT 500 - 16
630	14.7	35	45	63.8	33	33	60	144	HT 630 - 16

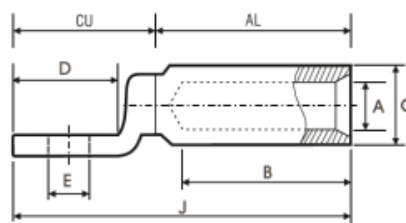
## Ordering Information

Order No	Model No	Product	Cable Size Cross Sec mm <sup>2</sup>	Hole Size Diameter mm	Current Capacity A
218320	HBT 35 - 8	Bi - Metallic Lugs	35	8	105
218330	HBT 50 - 8	Bi - Metallic Lugs	50	8	125
218340	HBT 70 - 8	Bi - Metallic Lugs	70	8	150
218350	HBT 95 - 10	Bi - Metallic Lugs	95	10	175
218365	HBT 185 - 12	Bi - Metallic Lugs	185	12	235
218370	HBT 240-12	Bi - Metallic Lugs	240	12	265
218375	HBT 300 - 12	Bi - Metallic Lugs	300	12	290

## Technical Details

Construction: Forged circular copper palm is friction welded to an EC grade Aluminium circular barrel thus achieving to test possible transition

Crimping Test applied force:  
 Upto 240mm<sup>2</sup> - 13 x 105 N  
 300mm<sup>2</sup> to 630mm<sup>2</sup> - 2.0 x 105 N  
 Above 630 mm<sup>2</sup> - 43 x 105 N



Product Code	Cable mm <sup>2</sup>	Dimension					
		A	C	D	G	H	B
HBT 35-10	35	8	16	20	10.3	79	43
HBT 50-12	50	9	20	25	12.8	85	43
HBT 70-12	70	11	20	25	12.8	85	43
HBT 95-12	95	12.5	20	25	12.8	85	43
HBT 120-12	120	13.7	25	30	12.8	108	59
HBT 150-12	150	15.5	25	30	12.8	108	59
HBT 185-12	185	17	32	35	14.5	115	59
HBT 240-14	240	19.5	32	35	14.5	115	59
HBT 300-16	300	23.3	40	36	16.5	137	85
HBT 400-16	400	26	40	36	16.5	153.5	85



Copper cable ferrules are manufactured from soft drawn, pure, high conductivity copper tubes conforming to BS standards.

Cable ferrules are fully annealed to ensure the electrical & mechanical strength.



Ordering Information

Order No	Model No	Product	Cable Size Cross sec mm <sup>2</sup>	Dimensions		
				A	C	J
218 403	HC 6	Tinned Copper Ferrules	6	3.8	5.5	22
218 404	HC 10	Tinned Copper Ferrules	10	4.5	6.2	22
218 405	HC 16	Tinned Copper Ferrules	16	5.4	7.1	44
218 406	HC 25	Tinned Copper Ferrules	25	6.8	8.8	47
218 409	HC 70	Tinned Copper Ferrules	70	11.3	14.7	50
218 410	HC 95	Tinned Copper Ferrules	95	13.5	17.4	54
218 411	HC 120	Tinned Copper Ferrules	120	15	19.4	65
218 412	HC 150	Tinned Copper Ferrules	150	16.5	21.2	65
218 413	HC 185	Tinned Copper Ferrules	185	18.5	23.5	65
218 414	HC 240	Tinned Copper Ferrules	240	21	26.5	89
218 415	HC 300	Tinned Copper Ferrules	300	23.5	30	89

Technical Details

Product Code	Cable mm <sup>2</sup>	Dimensions in mm		
		d1	d2	l
HC - 6	6	3.8	5.5	30
HC - 10	10	4.5	6	30
HC - 16	16	5.5	8.5	60
HC - 25	25	7	10	50
HC - 35	35	8.2	12.5	50
HC - 50	50	10	14.5	56
HC - 70	70	11.5	16.5	56
HC - 95	95	13.5	19	70
HC - 120	120	15.5	21	70
HC - 150	150	17	23.5	80
HC - 185	185	19	25.5	85
HC - 240	240	21.5	29	90
HC - 300	300	24.5	32	100

## CABLE TERMINALS



Different types of cable terminals available in insulated & non-insulated types for different electrical terminations.

RIPE - Hong Kong **ripe**

### Ordering Information

Order No	Model No	Product	Fork Gap mm	Cable Size sq.mm	Current A	Insulation Colour
203 100	SV 1.25 - 3.2	Insulated Terminals - Fork Type	3.2	0.5 - 1.5	19	Red
203 104	SV 1.25 - 4M	Insulated Terminals - Fork Type	4.3	0.5 - 1.5	19	Red
203 109	SV 1.25 - 6L	Insulated Terminals - Fork Type	6.5	0.5 - 1.5	19	Red
203 210	SV 2 - 3.2	Insulated Terminals - Fork Type	3.2	1.5 - 2.5	27	Blue
203 211	SV 2 - 3.7S	Insulated Terminals - Fork Type	3.7	1.5 - 2.5	27	Blue
203 214	SV 2 - 4M	Insulated Terminals - Fork Type	4.3	1.5 - 2.5	27	Blue
203 176	SV 5.5 - 5	Insulated Terminals - Fork Type	5.3	4.0 - 6.0	48	Yellow

### Technical Details

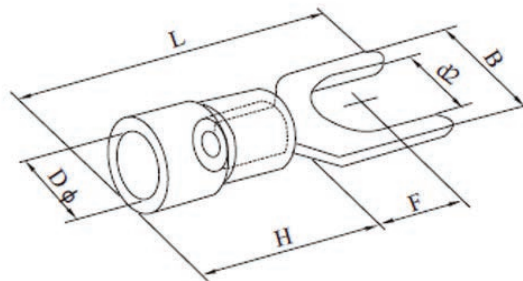
Maximum electrical rating of insulated fork terminal: 600V

Maximum temperature of insulated fork: 75°C

Terminal Body of fork wire terminal: Brass/Copper

Plating of fork terminal connector: Tin plated

Insulation material of fork terminal: vinyl (PVC)



Model No.	UNC	Screw dia.	Dimension					Section Size (mm <sup>2</sup> )	Thickness
		d2(mm)	B(mm)	L(mm)	F(mm)	H(mm)	D(mm)		
SV 1.25 - 3.2	#4	3.2	5.7	21.2	6.5	10	4.3	0.5 ~ 1.5mm <sup>2</sup> (22~16) :Imax = 19A	0.75mm
SV 1.25 - 4	#8	4.3	7.2	21.2	6.5				
SV 1.25 - 6	1/4	6.5	12	21.2	11				
SV 3	#4	3.2	5.7	21.2	6.5	10	4.9	1.5 ~ 2.5mm <sup>2</sup> (16~14) :Imax = 27A	0.8mm
SV 2 - 3.5	#6	3.7	5.7	21.2	6.5				
SV 2 - 4	#8	4.3	7.2	21.2	6.5				
SV 5 - 5	#10	5.3	9	23.9	7.5	12.5	6.7	4 ~ 6mm <sup>2</sup> (12~10) :Imax = 48A	1.0mm

**RIPE - Hong Kong** 

### Ordering Information

Order No	Model No	Product	Hole Size mm	Cable Size sq.mm	Current A	Insulation Colour
203 407	RV 1.25 - 6	Insulated Terminals - Ring	6.5mm	0.5 - 1.5	19	Red
203 408	RV 1.25 - 8	Insulated Terminals - Ring	8.4mm	0.5 - 1.5	19	Red
203 510	RV 2 - 3.2	Insulated Terminals - Ring	3.2mm	0.5 - 1.5	27	Blue
203 511	RV 2 - 3.7S	Insulated Terminals - Ring	3.7mm	1.5 - 2.5	27	Blue
203 515	RV 2 - 4L	Insulated Terminals - Ring	4.3mm	1.5 - 2.5	27	Blue
203 518	RV 2 - 6	Insulated Terminals - Ring	6.5mm	1.5 - 2.5	27	Blue
203 519	RV 2 - 8	Insulated Terminals - Ring	8.4mm	1.5 - 2.5	27	Yellow
203 520	RV 2 - 10	Insulated Terminals - Ring	10.5mm	1.5 - 2.5	27	Yellow
203 466	RV 5.5 - 4	Insulated Terminals - Ring	4.3mm	4.0 - 6.0	48	Yellow
203 468	RV 5.5 - 5	Insulated Terminals - Ring	5.3mm	4.0 - 6.0	48	Yellow
203 469	RV 5.5 - 6	Insulated Terminals - Ring	6.5mm	4.0 - 6.0	48	Yellow
203 470	RV 5.5 - 8	Insulated Terminals - Ring	8.4mm	4.0 - 6.0	48	Yellow
203 471	RV 5.5 - 10	Insulated Terminals - Ring	10.5mm	4.0 - 6.0	48	Yellow
203 472	RV 5.5 - 12	Insulated Terminals - Ring	13.0mm	4.0 - 6.0	48	Yellow

## Technical Details

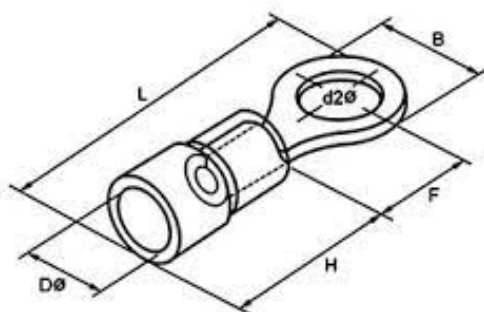
Maximum electrical rating of insulated ring terminal: 600V

Maximum temperature of insulated ring: 75°C

Terminal Body of insulated ring lugs: Brass/Copper

Plating of ring terminal insulated: Tin plated

Insulation material of terminal ring connectors: vinyl (PVC)



Model No.	UNC	Screw dia.	Dimension					Section Size mm <sup>2</sup>	Thickness
		d2(mm)	B(mm)	L(mm)	F(mm)	H(mm)	D(mm)		
RV 1.25 - 6	1/4	6.5	11.6	27.5	11.1	10	4.3	0.5 ~ 1.5mm <sup>2</sup> (22~16) :Imax = 19A	0.75mm
RV 1.25 - 8	5/16	8.4	11.6	27.5	11.1				
RV 2 - 3	#4	3.2	6.6	17.8	4.3	10	4.9	1.5 ~ 2.5mm <sup>2</sup> (16~14) :Imax = 27A	0.8mm
RVS 2 - 3.5	#6	3.7	6.6	18.8	4.3				
RVL 2 - 4	#8	4.3	8.5	22.5	7.75				
RV 2 - 6	1/4	6.5	12	27.6	11				
RV 2 - 8	5/16	8.4	12	27.6	11				
RV 2 - 10	3/8	10.5	13.6	30.2	13.9				
RV 5.5 - 4	#8	4.3	9.5	25.5	8.3	12.5	6.7	4 ~ 6mm <sup>2</sup> (12~10) :Imax = 48A	1.0mm
RV 5.5 - 5	#10	5.3	9.5	25.5	8.3				
RV 5.5 - 6	1/4	6.5	12	31.5	13				
RV 5.5 - 8	5/16	8.4	15	33.7	13.7				
RV 5.5 - 10	3/8	10.5	15	33.7	13.7				
RV 5.5 - 12	1/2	13	19.2	38.1	16				

## Ordering Information

Order No	Model No	Product	Pin Length mm	Cable Size sq.mm	Current A	Insulation Colour
204 102	PTV 1.25 - 9	Insulated Pin Terminals	9	0.25 - 1.65	19	Red
204 103	PTV 1.25 - 10	Insulated Pin Terminals	10	0.25 - 1.65	19	Red
204 104	PTV 1.25 - 12	Insulated Pin Terminals	12	0.25 - 1.65	19	Blue
204 172	PTV 2 - 9	Insulated Pin Terminals	9	1.04 - 2.63	27	Blue
204 173	PTV 2 - 10	Insulated Pin Terminals	10	1.04 - 2.63	27	Blue
204 174	PTV 2 - 12	Insulated Pin Terminals	12	1.04 - 2.63	27	Blue
204 155	PTV 5.5 - 13	Insulated Pin Terminals	13	2.63 - 6.64	48	Yellow

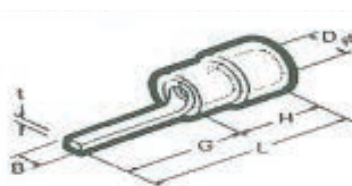
## Technical Details



Model No.	Dimension (mm)			
	F	L	H	DΦ
PTV 1.25 - 9	1.9	19	10	4.3
PTV 1.25 - 10	1.9	20	10	4.3
PTV 1.25 - 12	1.9	22	10	4.3
PTV 2 - 9	1.9	19	10	4.9
PTV 2 - 10	1.9	20	-	-
PTV 2 - 12	1.9	22	-	-
PTV 5.5 - 13	2.8	25.5	12.5	6.7

## Ordering Information

Order No	Model No	Product	Blade Length mm	Cable Size sq.mm	Current A	Insulation Colour
225 870	PIN 1.25F	Blade Terminals	12.5	0.57 ~ 1.44	19	Red
225 871	PIN 2F	Blade Terminals	12.5	1.04 ~ 2.63	27	Blue
225 872	PIN 5.5F	Blade Terminals	14.5	2.63 ~ 6.64	48	Yellow



Model No.	Dimension (mm)					Wire Range		
	B	t	L	G	H	Single mm	Twine mm <sup>2</sup>	AWG
PIN 1.25F	3.1	0.8	17	12.5	4.5	0.57 ~ 1.44	0.25 ~ 1.65	22 ~ 16
PIN 2F	3.1	0.8	17	12.5	4.5	1.14 ~ 1.82	1.04 ~ 2.63	16 ~ 14
PIN 5.5F	3.1	1.0	21	12.5	6.5	1.82 ~ 2.89	2.63 ~ 6.64	12 ~ 10



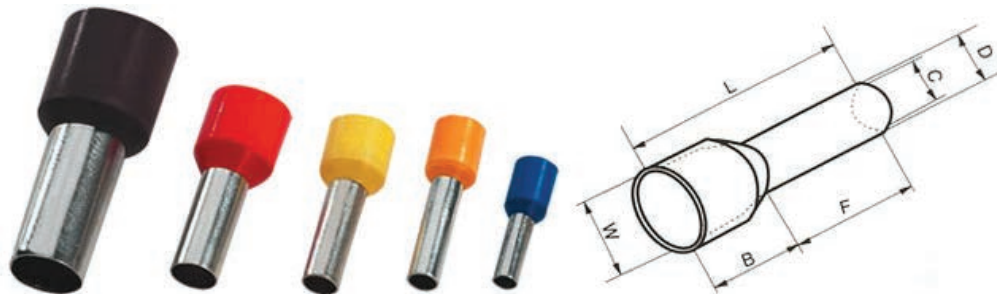
## Ordering Information

Order No	Model No	Product	Pin Length mm	Cable Size sq.mm	Current A	Insulation Colour
203 700	E0505	Insulated Cord-End Terminals	5	0.5	9	Red
203 701	E0506	Insulated Cord-End Terminals	6	0.5	9	Red
203 702	E0508	Insulated Cord-End Terminals	8	0.5	9	Red
203 703	E0510	Insulated Cord-End Terminals	10	0.5	9	Red
203 704	E0512	Insulated Cord-End Terminals	12	0.5	9	Red
203 706	E7508	Insulated Cord-End Terminals	8	0.75	12	Red
203 708	E7510	Insulated Cord-End Terminals	10	0.75	12	Red
203 709	E7512	Insulated Cord-End Terminals	12	0.75	12	Red
203 716	E1008	Insulated Cord-End Terminals	8	1.0	17	Red
203 718	E1010	Insulated Cord-End Terminals	10	1.0	17	Red
203 725	E1508	Insulated Cord-End Terminals	8	1.5	18	Red
203 727	E1510	Insulated Cord-End Terminals	10	1.5	18	Red
203 728	E1512	Insulated Cord-End Terminals	12	1.5	18	Red
203 731	E2508	Insulated Cord-End Terminals	8	2.5	30	Red
203 732	E2510	Insulated Cord-End Terminals	10	2.5	30	Red
203 740	E4009	Insulated Cord-End Terminals	9	4.0	35	Red
203 742	E6012	Insulated Cord-End Terminals 6mm <sup>2</sup>	12	6.0	50	Red
203 744	E10 - 18	Insulated Cord-End Terminals 10mm <sup>2</sup>	18	10.0	50	Red
203 746	E16 - 18	Insulated Cord-End Terminals 16mm <sup>2</sup>	18	16.0	50	Red
203 750	E0505	Insulated Cord-End Terminals	5	0.5	9	Yellow
203 751	E0506	Insulated Cord-End Terminals	6	0.5	9	Yellow
203 752	E0508	Insulated Cord-End Terminals	8	0.5	9	Yellow
203 753	E0510	Insulated Cord-End Terminals	10	0.5	9	Yellow

203 756	E7508	Insulated Cord-End Terminals	8	0.75	12	Yellow
203 758	E7510	Insulated Cord-End Terminals	10	0.75	12	Yellow
203 766	E1008	Insulated Cord-End Terminals	8	1.0	17	Yellow
203 768	E1010	Insulated Cord-End Terminals	10	1.0	17	Yellow
203 775	E1508	Insulated Cord-End Terminals	8	1.5	18	Yellow
203 777	E1510	Insulated Cord-End Terminals	10	1.5	18	Yellow
203 781	E2508	Insulated Cord-End Terminals	8	2.5	30	Yellow
203 782	E2510	Insulated Cord-End Terminals	10	2.5	30	Yellow
203 790	E4009	Insulated Cord-End Terminals	9	4.0	35	Yellow
203 800	E0505	Insulated Cord-End Terminals	5	0.5	9	Blue
203 801	E0506	Insulated Cord-End Terminals	6	0.5	9	Blue
203 802	E0508	Insulated Cord-End Terminals	8	0.5	9	Blue
203 203	E0510	Insulated Cord-End Terminals	10	0.5	9	Blue
203 806	E7508	Insulated Cord-End Terminals	8	0.75	12	Blue
203 808	E7510	Insulated Cord-End Terminals	10	0.75	12	Blue
203 816	E1008	Insulated Cord-End Terminals	8	1.0	17	Blue
203 818	E1010	Insulated Cord-End Terminals	10	1.0	17	Blue
203 825	E1508	Insulated Cord-End Terminals	8	1.5	18	Blue
203 827	E1510	Insulated Cord-End Terminals	10	1.5	18	Blue
203 831	E2508	Insulated Cord-End Terminals	8	2.5	30	Blue
203 832	E2510	Insulated Cord-End Terminals	10	2.5	30	Blue
203 840	E4009	Insulated Cord-End Terminals	9	4.0	35	Blue

## Technical Details

Model No.	Dimension						LEAD AREA mm <sup>2</sup>
	F	L	W	DΦ	CΦ	A.W.G	
E0506	6	12	2.6	1.3	1	#22	0.5
E0508	8	14					
E0510	10	16					
E7506	6	12.4	2.8	1.5	1.2	#20	0.75
E7508	8	14.6					
E7510	10	16.4					
E7512	12	18.4					
E1010	10	16.4	3	1.7	1.4	#18	1
E1012	12	18.4					
E1508	8	14.6	3.5	2	1.7	#16	1.5
E1510	10	16.4					
E2508	8	15.2	4	2.6	2.3	#14	2.5
E4009	9	16.5	4.4	3.2	2.8	#12	4
E6012	12	20	6.3	3.9	3.5	#10	6
E10-18	18	27.5	7.6	4.9	4.5	#7	10
E16-18	18	28.2	8.8	6.2	5.8	#5	16



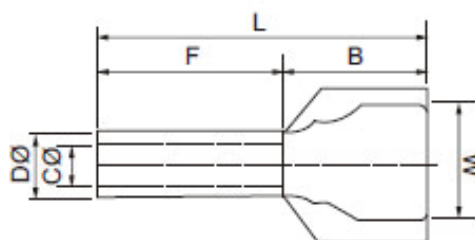
Material : Copper

Margin temperature : 105 U<sub>i</sub>=300V

## Ordering Information

Order No	Model No	Product	Pin Length mm	Cable Size sq.mm	Current A	Insulation Colour
208 601	TE 7508	Tube Pre insulating terminals- TE	8	2 x 0.75	12	Blue
208 623	TE 7508	Tube Pre insulating terminals- TE	8	2 x 0.75	12	Red
208 605	TE 1008	Tube Pre insulating terminals- TE	8	2 x 1.0	17	Red
208 608	TE 1508	Tube Pre insulating terminals- TE	8	2 x 1.5	18	Blue
208 624	TE 1508	Tube Pre insulating terminals- TE	8	2 x 1.5	18	Red
208 614	TE 2513	Tube Pre insulating terminals- TE	13	2 x 2.5	30	Blue
208 625	TE 2513	Tube Pre insulating terminals- TE	13	2 x 2.5	30	Red
208 616	TE 4012	Tube Pre insulating terminals- TE	12	2 x 4.0	35	Grey
208 618	TE 6014	Tube Pre insulating terminals- TE	14	2 x 6.0	50	Yellow

## Technical Details

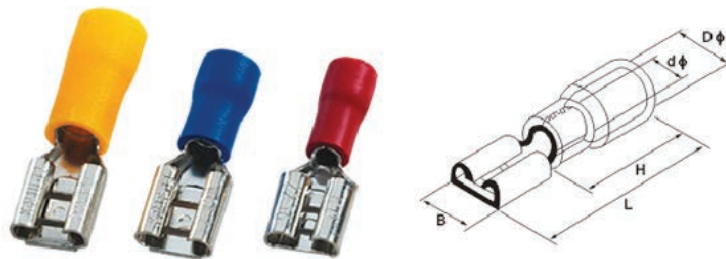


Model No.	Conductor (mm <sup>2</sup> )	Dimension(mm)				DØ	CØ
		F	L	W	B		
TE 0508	2x0.5	8	14.5	6.5	6.5	1.8	1.5
TE 0508	2x0.75	8	14.7	6.7	6.7	2.1	1.8
TE 7510	2x0.75	10	16.7	6.7	6.7	2.1	1.8
TE 1008	2x1.0	8	15.1	7.1	7.1	2.3	2
TE 1010	2x1.0	10	17.1	7.1	7.1	2.3	2
TE 1508	2x1.5	8	15.5	7.2	7.2	2.6	2.3
TE 1512	2x1.5	12	19.5	7.5	7.5	2.6	2.3
TE 1510	2x1.5	10	18.5	8.5	8.5	3.3	2.9
TE 2513	2x2.5	13	21.5	8.5	8.5	3.3	2.9
TE 4012	2x4.0	12	23.1	11.1	11.1	4.2	3.8
TE 6014	2x6.0	14	26.1	12.1	12.1	5.3	4.9

## Ordering Information

Order No	Model No	Product	Blade Length mm	Cable Size sq.mm	Current A	Insulation Colour
204 202	FDD1 - 187 5	Insulated Female Disconnectors	19.0	0.5 - 1.5	10	Red
204 204	FDD1 - 250	Insulated Female Disconnectors	20.5	0.5 - 1.5	10	Red
204 209	FDD1 - 205	Insulated Female Disconnectors	20.5	0.5 - 1.5	10	Red
204 270	FDD2 - 110 5	Insulated Female Disconnectors	18.5	1.5 - 2.5	15	Blue
204 272	FDD2 - 187 5	Insulated Female Disconnectors	19.0	1.5 - 2.5	15	Blue
204 274	FDD2 - 250	Insulated Female Disconnectors	20.5	1.5 - 2.5	15	Blue
204 279	FDD2 - 205	Insulated Female Disconnectors	20.5	1.5 - 2.5	15	Blue

## Technical Details



Model No.	NEMATAB mm	Thickness mm	Dimension				
			B mm	dΦ mm	DΦ mm	L mm	H mm
FDD 1.25-187 (5)	0.5*4.75	0.35	5.6	1.7	3.8	19	10
FDD 1.25-205	0.5*5.2	0.35	6.5	1.7	3.8	20	
FDD 1.25-250	0.8*6.35	0.4	7.4	1.7	3.8	21	
FDD 2-110 (5)	0.5*2.8	0.3	3.8	2.3	4.3	19	10
FDD 2-187 (5)	0.5*4.75	0.35	5.6	2.3	4.3	19	
FDD 2-205	0.5*5.2	0.35	6.5	2.3	4.3	20	
FDD 2-250	0.8*6.35	0.4	7.4	2.3	4.3	21	

## Ordering Information

Order No	Model No	Product	Blade Length mm	Cable Size sq.mm	Current A	Insulation Colour
204 400	MDD1 - 110 5	Insulated Male Disconnectors	18.5	0.5 - 1.5	10	Red
204 402	MDD1 - 187 5	Insulated Male Disconnectors	19.0	0.5 - 1.5	10	Red
204 404	MDD1 - 250	Insulated Male Disconnectors	20.5	0.5 - 1.5	10	Red
204 472	MDD2 - 187 5	Insulated Male Disconnectors	19.0	1.5 - 2.5	15	Blue
204 473	MDD2 - 187 8	Insulated Male Disconnectors	19.0	1.5 - 2.5	15	Blue
204 474	MDD2 - 250	Insulated Male Disconnectors	20.5	1.5 - 2.5	15	Blue
204 454	MDD5 - 250	Insulated Male Disconnectors	24.5	4.0 - 6.0	24	Yellow

## Technical Details

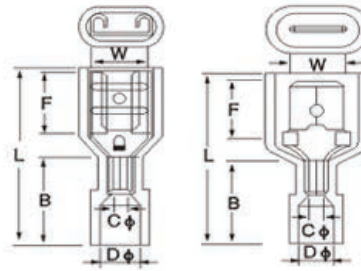


Model No.	NEMATAB mm	Thickness mm	Dimension				
			B mm	dΦ mm	DΦ mm	L mm	H mm
MDD 1.25 - 110 (5)	0.5*2.8	0.5	2.8	1.7	4.3	17.7	10
MDD 1.25 - 187 (5)	0.5*4.75	0.5	4.75	1.7	4.3	18.5	
MDD 1.25 - 250	0.8*6.3	0.4	6.3	1.7	4.3	21	
MDD 2 - 187 (5)	0.5*4.75	0.5	4.75	2.3	4.3	18.5	10
MDD 2 - 187 (8)	0.8*4.75	0.8	4.75	2.3	4.3	18.5	
MDD 2 - 250	0.8*6.3	0.4	6.35	2.3	4.3	21	
MDD 5.5 - 250	0.8*6.3	0.4	6.3	3.4	5.7	25	14

## Ordering Information

Order No	Model No	Product	Blade Length mm	Cable Size sq.mm	Current A	Insulation Colour
204 502	FDFD 1.25 - 187 (5)	Fully Insulated Female Disconnectors	19.0	0.5 - 1.5	10	Red
204 504	FDFD 1.25 - 250	Fully Insulated Female Disconnectors	20.5	0.5 - 1.5	10	Red
204 572	FDFD 2 - 187 (5)	Fully Insulated Female Disconnectors	19.0	1.5 - 2.5	15	Blue
204 574	FDFD 2 - 250	Fully Insulated Female Disconnectors	20.5	1.5 - 2.5	15	Blue
204 554	FDFD 5.5 - 250	Fully Insulated Female Disconnectors	20.5	4.0 - 6.0	24	Yellow

## Technical Details



Model No.	NEMATAB mm	Thickness mm	Dimension					
			B mm	W mm	L mm	H mm	dΦ mm	DΦ mm
FDFD 1.25 - 187 (5)	0.5*4.75	0.35	5.6	7.4	19.5	10	1.8	3.5
FDFD 1.25 - 250	0.8*6.35	0.4	7.4	10	23			
FDFD 2-187(5)	0.5*4.75	0.35	5.6	7.4	19.5	10	2.3	4
FDFD 2-250	0.8*6.35	0.4	7.4	10	23			
FDFD 5.5-250	0.8*6.35	0.4	7.4	10	24	11	3.5	5

## Ordering Information

Order No	Model No	Product	Barrel Length mm	Cable Size sq.mm	Current A	Insulation Colour
204 760	BV-1	Insulated Butt Splices	26	0.5 - 1.5	19	Red
204 771	BV-2	Insulated Butt Splices	26	1.5 - 2.5	27	Blue
204 767	BV-5	Insulated Butt Splices	26	4.0 - 6.0	48	Yellow

## Technical Details



Model No.	Section of lead		Dimension			Max Current
	A.W.G	mm <sup>2</sup>	l	d $\phi$	L	
BV 1.25	22 - 16	0.5 - 1.5	15	1.7	26	19A
BV 2	16 - 14	1.5 - 2.5	15	2.3	26	27A
BV 5.5	12 - 10	4 - 6	15	3.4	26	48A



## Ordering Information

Order No	Model No	Product	Barrel Length mm	Cable Size sq.mm	Current A	Insulation Colour
204 616	MPD 5.5 - 4A	Insulated Terminal - Bullet (Male)	3.96	4 - 6	24	Yellow
204 666	FRD 5.5 - 4B	Insulated Socket - Bullet (Female)	3.86	4 - 6	24	Yellow

## Technical Details

Material: Copper



Model No.	Thickness	Dimension				
		bΦ mm	F mm	DΦ mm	H mm	L mm
MPD 5.5 - 4A	0.4	5	12	3.4	13	25

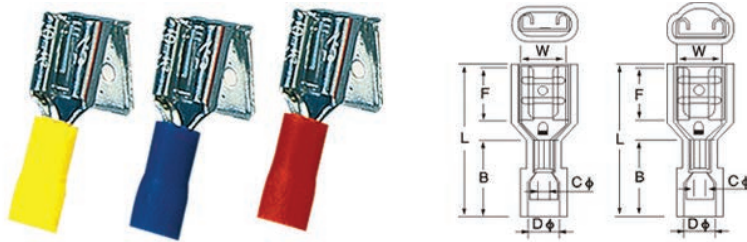


Model No.	Thickness	Dimension				
		bΦ mm	F mm	DΦ mm	H mm	L mm
MPD 5.5 - 195	0.4	5	12	3.4	13	25

## Ordering Information

Order No	Model No	Product	Barrel Length mm	Cable Size sq.mm	Current A	Insulation Colour
204 730	MF 1.25 - 7A	Insulated Terminals - Piggy Back	11.5	0.5 - 1.5	10	Red
204 741	MF 2 - 7A	Insulated Terminals - Piggy Back	11.5	1.5 - 2.5	15	Blue
	MF 5 - 7A	Insulated Terminals - Piggy Back	13	4.0 -6.0	24	Yellow

## Technical Details



Model No.	NEMATAB	Dimension					
		B mm	B1 mm	H mm	DΦ mm	dΦ mm	L mm
PBDD 1.25-250	0.8*6.35	7.4	6.3	10	3.8	1.7	22
PBDD 2-250	0.8*6.35	7.4	6.3	10	4.3	2.3	22
PBDD 2-250	0.8*6.35	7.4	14	5.7	3.4	2.3	25

## Ordering Information

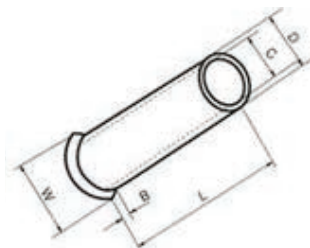
Order No	Model No	Product	Barrel Length mm	Cable Size sq.mm	Current A
203 903	EN0208	Non-Insulated Cord-End Sleeves	8	0.2	5.5
203 905	EN0308	Non-Insulated Cord-End Sleeves	8	0.3	7
203 908	EN0508	Non-Insulated Cord-End Sleeves	8	0.5	9
203 912	EN7508	Non-Insulated Cord-End Sleeves	8	0.75	12
203 916	EN1008	Non-Insulated Cord-End Sleeves	8	1.0	17
203 919	EN1015	Non-Insulated Cord-End Sleeves	15	1.0	17
203 924	EN1510	Non-Insulated Cord-End Sleeves	10	1.5	18
203 933	EN2512	Non-Insulated Cord-End Sleeves	12	2.5	30
203 941	EN4015	Non-Insulated Cord-End Sleeves	15	4.0	35
203 947	EN6015	Non-Insulated Cord-End Sleeves	15	6.0	50
203 953	EN10-18	Non-Insulated Cord-End Sleeves	18	10.0	70
203 958	EN16-18	Non-Insulated Cord-End Sleeves	18	16.0	95
203 968	EN25-20	Non-Insulated Cord-End Sleeves	20	25.0	125
203 978	EN35-25	Non-Insulated Cord-End Sleeves	25	20.0	170

## Technical Details

Margin temperature: 105

Material: Copper

Ui=300V



Model No.	Dimension (mm)				Section of lead	
	L	D	C	W	A.W.G	mm <sup>2</sup>
EN1510	10	2	1.7	3.5	#16	1.5
EN2512	12	2.5	2.2	2.5	#14	2.5
EN4009	9	3.2	2.8	4	#12	4
EN4012	12					
EN6015	15	3.9	3.5	4.8	#10	6
EN10-18	18	4.9	4.5	5.8	#7	10
EN16-18	18	6.2	5.8	7.5	#5	16
EN25-22	22	7.9	7.5	9.2	#4	25
EN35-25	25	8.7	8.3	10	#2	35



Vynil wire end caps are used to insulate the wire end terminals & cable lugs to identify the cables in electrical installations.

Vynil wire end caps are used to insulate the wire end terminals and cable lugs to identify the cables in electrical installations.

Vynil wire end caps are available in both new color code ( Brown/Black/Grey/Blue) and old color code (Red/ Yellow/ Blue/ Black).



## Ordering Information

Order No	Model No	Product	D1 mm	D2 mm	D3 mm	L mm	F mm	Colour
200 200	V-1.25	Vynil Wire End Caps	2.8	3.3	3.1	13	6	Red
200 201	V-2	Vynil Wire End Caps	3.3	4.5	3.7	14	7	Red
200 202	V-3.5	Vynil Wire End Caps	4.2	5.7	4.1	17	9	Red
200 203	V-5.5	Vynil Wire End Caps	4.8	5.7	5.2	17	9	Red
200 204	V-8	Vynil Wire End Caps	6.2	7.2	6.2	19	10	Red
200 205	V-14	Vynil Wire End Caps	7.5	10	8	25	14	Red
200 206	V-22	Vynil Wire End Caps	10.5	12	9.5	30	15	Red
200 207	V-38	Vynil Wire End Caps	12.5	14	11.8	34	17.5	Red
200 208	V-60	Vynil Wire End Caps	15	16.8	13.5	39	20	Red
200 209	V-80	Vynil Wire End Caps	17	19	16	47	25	Red
200 210	V-100	Vynil Wire End Caps	19	22	18	54	30	Red
200 211	V-125	Vynil Wire End Caps	21	24	20	57	32	Red
200 212	V-150	Vynil Wire End Caps	23	24.5	22	65	35	Red
200 213	V-200	Vynil Wire End Caps	27	32	24	65	35	Red
200 214	V-250	Vynil Wire End Caps	29	38	26.5	77	35	Red
200 215	V-300	Vynil Wire End Caps	29	38	29	77	37	Red
200 216	V-400	Vynil Wire End Caps	42	45	36	85	46	Red
200 217	V-500	Vynil Wire End Caps	46	48	40	88	41	Red

200 220	V-1.25	Vynil Wire End Caps	2.8	3.3	3.1	13	6	Yellow
200 221	V-2	Vynil Wire End Caps	3.3	4.5	3.7	14	7	Yellow
200 222	V-3.5	Vynil Wire End Caps	4.2	5.7	4.1	17	9	Yellow
200 223	V-5.5	Vynil Wire End Caps	4.8	5.7	5.2	17	9	Yellow
200 224	V-8	Vynil Wire End Caps	6.2	7.2	6.2	19	10	Yellow
200 225	V-14	Vynil Wire End Caps	7.5	10	8	25	14	Yellow
200 226	V-22	Vynil Wire End Caps	10.5	12	9.5	30	15	Yellow
200 227	V-38	Vynil Wire End Caps	12.5	14	11.8	34	17.5	Yellow
200 228	V-60	Vynil Wire End Caps	15	16.8	13.5	39	20	Yellow
200 229	V-80	Vynil Wire End Caps	17	19	16	47	25	Yellow
200 230	V-100	Vynil Wire End Caps	19	22	18	54	30	Yellow
200 231	V-125	Vynil Wire End Caps	21	24	20	57	32	Yellow
200 232	V-150	Vynil Wire End Caps	23	24.5	22	65	35	Yellow
200 233	V-200	Vynil Wire End Caps	27	32	24	65	35	Yellow
200 234	V-250	Vynil Wire End Caps	29	38	26.5	77	35	Yellow
200 235	V-300	Vynil Wire End Caps	29	38	29	77	37	Yellow
200 236	V-400	Vynil Wire End Caps	42	45	36	85	46	Yellow
200 237	V-500	Vynil Wire End Caps	46	48	40	88	41	Yellow
200 160	V-1.25	Vynil Wire End Caps	2.8	3.3	3.1	13	6	Blue
200 161	V-2	Vynil Wire End Caps	3.3	4.5	3.7	14	7	Blue
200 162	V-3.5	Vynil Wire End Caps	4.2	5.7	4.1	17	9	Blue
200 163	V-5.5	Vynil Wire End Caps	4.8	5.7	5.2	17	9	Blue
200 164	V-8	Vynil Wire End Caps	6.2	7.2	6.2	19	10	Blue
200 165	V-14	Vynil Wire End Caps	7.5	10	8	25	14	Blue
200 166	V-22	Vynil Wire End Caps	10.5	12	9.5	30	15	Blue
200 167	V-38	Vynil Wire End Caps	12.5	14	11.8	34	17.5	Blue
200 168	V-60	Vynil Wire End Caps	15	16.8	13.5	39	20	Blue
200 169	V-80	Vynil Wire End Caps	17	19	16	47	25	Blue
200 170	V-100	Vynil Wire End Caps	19	22	18	54	30	Blue
200 171	V-125	Vynil Wire End Caps	21	24	20	57	32	Blue
200 172	V-150	Vynil Wire End Caps	23	24.5	22	65	35	Blue
200 173	V-200	Vynil Wire End Caps	27	32	24	65	35	Blue

200 174	V-250	Vynil Wire End Caps	29	38	26.5	77	35	Blue
200 175	V-300	Vynil Wire End Caps	29	38	29	77	37	Blue
200 176	V-400	Vynil Wire End Caps	42	45	36	85	46	Blue
200 177	V-500	Vynil Wire End Caps	46	48	40	88	41	Blue
200 178	V-630	Vynil Wire End Caps	52	54	44	92	50	Blue

200 120	V-1.25	Vynil Wire End Caps	2.8	3.3	3.1	13	6	Black
200 121	V-2	Vynil Wire End Caps	3.3	4.5	3.7	14	7	Black
200 122	V-3.5	Vynil Wire End Caps	4.2	5.7	4.1	17	9	Black
200 123	V-5.5	Vynil Wire End Caps	4.8	5.7	5.2	17	9	Black
200 124	V-8	Vynil Wire End Caps	6.2	7.2	6.2	19	10	Black
200 125	V-14	Vynil Wire End Caps	7.5	10	8	25	14	Black
200 126	V-22	Vynil Wire End Caps	10.5	12	9.5	30	15	Black
200 127	V-38	Vynil Wire End Caps	12.5	14	11.8	34	17.5	Black
200 128	V-60	Vynil Wire End Caps	15	16.8	13.5	39	20	Black
200 129	V-80	Vynil Wire End Caps	17	19	16	47	25	Black
200 130	V-100	Vynil Wire End Caps	19	22	18	54	30	Black
200 131	V-125	Vynil Wire End Caps	21	24	20	57	32	Black
200 132	V-150	Vynil Wire End Caps	23	24.5	22	65	35	Black
200 133	V-200	Vynil Wire End Caps	27	32	24	65	35	Black
200 134	V-250	Vynil Wire End Caps	29	38	26.5	77	35	Black
200 135	V-300	Vynil Wire End Caps	29	38	29	77	37	Black
200 136	V-400	Vynil Wire End Caps	42	45	36	85	46	Black
200 137	V-500	Vynil Wire End Caps	46	48	40	88	41	Black
200 138	V-630	Vynil Wire End Caps	52	54	44	92	50	Black

200 100	V-1.25	Vynil Wire End Caps	2.8	3.3	3.1	13	6	Brown
200 101	V-2	Vynil Wire End Caps	3.3	4.5	3.7	14	7	Brown
200 102	V-3.5	Vynil Wire End Caps	4.2	5.7	4.1	17	9	Brown
200 103	V-5.5	Vynil Wire End Caps	4.8	5.7	5.2	17	9	Brown
200 104	V-8	Vynil Wire End Caps	6.2	7.2	6.2	19	10	Brown
200 105	V-14	Vynil Wire End Caps	7.5	10	8	25	14	Brown
200 106	V-22	Vynil Wire End Caps	10.5	12	9.5	30	15	Brown

200 107	V-38	Vynil Wire End Caps	12.5	14	11.8	34	17.5	Brown
200 108	V-60	Vynil Wire End Caps	15	16.8	13.5	39	20	Brown
200 109	V-80	Vynil Wire End Caps	17	19	16	47	25	Brown
200 110	V-100	Vynil Wire End Caps	19	22	18	54	30	Brown
200 111	V-125	Vynil Wire End Caps	21	24	20	57	32	Brown
200 112	V-150	Vynil Wire End Caps	23	24.5	22	65	35	Brown
200 113	V-200	Vynil Wire End Caps	27	32	24	65	35	Brown
200 114	V-250	Vynil Wire End Caps	29	38	26.5	77	35	Brown
200 115	V-300	Vynil Wire End Caps	29	38	29	77	37	Brown
200 116	V-400	Vynil Wire End Caps	42	45	36	85	46	Brown
200 117	V-500	Vynil Wire End Caps	46	48	40	88	41	Brown
200 118	V-630	Vynil Wire End Caps	52	54	44	92	50	Brown
200 140	V-1.25	Vynil Wire End Caps	2.8	3.3	3.1	13	6	Grey
200 141	V-2	Vynil Wire End Caps	3.3	4.5	3.7	14	7	Grey
200 142	V-3.5	Vynil Wire End Caps	4.2	5.7	4.1	17	9	Grey
200 143	V-5.5	Vynil Wire End Caps	4.8	5.7	5.2	17	9	Grey
200 144	V-8	Vynil Wire End Caps	6.2	7.2	6.2	19	10	Grey
200 145	V-14	Vynil Wire End Caps	7.5	10	8	25	14	Grey
200 146	V-22	Vynil Wire End Caps	10.5	12	9.5	30	15	Grey
200 147	V-38	Vynil Wire End Caps	12.5	14	11.8	34	17.5	Grey
200 148	V-60	Vynil Wire End Caps	15	16.8	13.5	39	20	Grey
200 149	V-80	Vynil Wire End Caps	17	19	16	47	25	Grey
200 150	V-100	Vynil Wire End Caps	19	22	18	54	30	Grey
200 151	V-125	Vynil Wire End Caps	21	24	20	57	32	Grey
200 152	V-150	Vynil Wire End Caps	23	24.5	22	65	35	Grey
200 153	V-200	Vynil Wire End Caps	27	32	24	65	35	Grey
200 154	V-250	Vynil Wire End Caps	29	38	26.5	77	35	Grey
200 155	V-300	Vynil Wire End Caps	29	38	29	77	37	Grey
200 156	V-400	Vynil Wire End Caps	42	45	36	85	46	Grey
200 157	V-500	Vynil Wire End Caps	46	48	40	88	41	Grey
200 158	V-630	Vynil Wire End Caps	52	54	44	92	50	Grey

200 180	V-1.25	Vynil Wire End Caps	2.8	3.3	3.1	13	6	Green
200 181	V-2	Vynil Wire End Caps	3.3	4.5	3.7	14	7	Green
200 182	V-3.5	Vynil Wire End Caps	4.2	5.7	4.1	17	9	Green
200 183	V-5.5	Vynil Wire End Caps	4.8	5.7	5.2	17	9	Green
200 184	V-8	Vynil Wire End Caps	6.2	7.2	6.2	19	10	Green
200 185	V-14	Vynil Wire End Caps	7.5	10	8	25	14	Green
200 186	V-22	Vynil Wire End Caps	10.5	12	9.5	30	15	Green
200 187	V-38	Vynil Wire End Caps	12.5	14	11.8	34	17.5	Green
200 188	V-60	Vynil Wire End Caps	15	16.8	13.5	39	20	Green
200 189	V-80	Vynil Wire End Caps	17	19	16	47	25	Green
200190	V-100	Vynil Wire End Caps	19	22	18	54	30	Green
200 191	V-125	Vynil Wire End Caps	21	24	20	57	32	Green
200 192	V-150	Vynil Wire End Caps	23	24.5	22	65	35	Green
200 193	V-200	Vynil Wire End Caps	27	32	24	65	35	Green
200 194	V-250	Vynil Wire End Caps	29	38	26.5	77	35	Green
200 195	V-300	Vynil Wire End Caps	29	38	29	77	37	Green
200 196	V-400	Vynil Wire End Caps	42	45	36	85	46	Green
200 197	V-500	Vynil Wire End Caps	46	48	40	88	41	Green

## Technical Details

For insulation of vynil wire end cap to cable lug can do by simply tighten the vynil wire end cap on to the lug.

Material: Soft PVC.

Maximum service temp: 80°C.







DIN rail ( Deutsches Institute for Normung) is standard rail for DIN mounting equipments.

DIN rails are available in different materials for different applications.

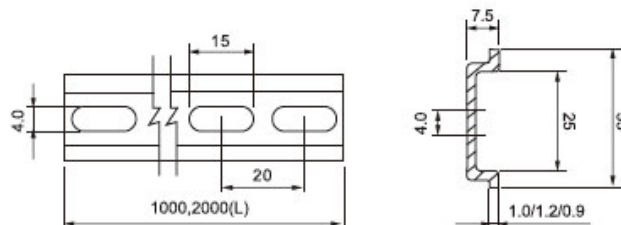
RIPE - Hong Kong **ripe**

## Ordering Information

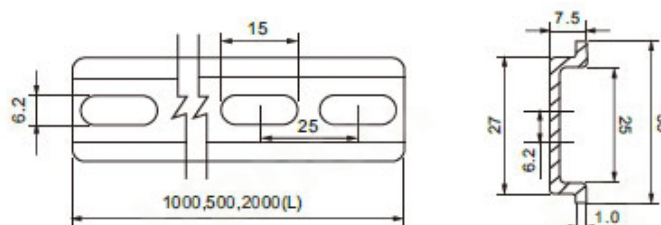
Order No	Model No	Product	Cable Range mm	Thickness
208 992	AL-3501	Din Rail (Alluminium)	35 x 7.5	1.5 mm
208 993	T - 3501	Din Rail (Iron) -Steel Tinned Plated	35 x 7.5	1.0 mm

## Technical Details

**AL-3501(35×7.5)**



**T-3501(35×7.5)**



## DIN RAIL TERMINALS



DIN rail terminals are used to terminate the cables in professional way in electrical installations.

Different types and sizes of DIN rail terminals are available for different applications.

**DIKEN - Taiwan** 

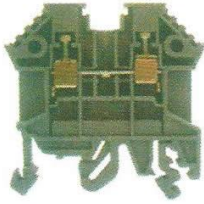
### Ordering Information

Order No	Model No	Product	Colour	Conductor Size	Rated Current A
225 900	HT - 2.5	Din Rail Terminals	Grey	2.5 mm	25
225 901	HT - 4	Din Rail Terminals	Grey	4 mm	32
225 902	HT - 6	Din Rail Terminals	Grey	6 mm	41
225 903	HT -10	Din Rail Terminals	Grey	10 mm	57
225 904	HT - 16	Din Rail Terminals	Grey	16 mm	76
225 920	EP - 4A	End plate for HT-2.5 to 10	-	-	-
225 930	HT - 5	End Stopper	-	-	-

### Technical Details

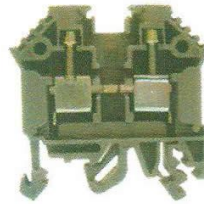
Material - Polymide 66

HT-2.5



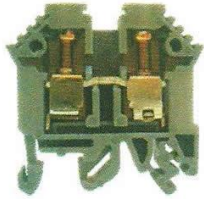
Terminal width	5.1 mm
Insulation stripping length	7 mm
Solid	0.2 - 4
Stranded	0.2 - 2.5
AWG	22 - 12

HT-4



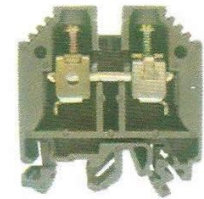
Terminal width	6.2 mm
Insulation stripping length	11.5 mm
Solid	0.2 - 6
Stranded	0.2 - 4
AWG	22 - 10

HT-10



Terminal width	8.4 mm
Insulation stripping length	12 mm
Solid	0.2 - 10
Stranded	0.2 - 10
AWG	22 - 8

HT-16



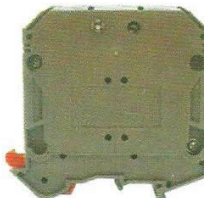
Terminal width	12.3 mm
Insulation stripping length	15 mm
Solid	2.5 - 25
Stranded	2.5 - 16
AWG	12 - 6

HT-35



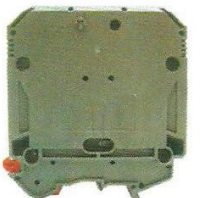
Terminal width	16.2 mm
Insulation stripping length	18 mm
Solid	2.5 - 50
Stranded	2.5 - 35
AWG	12 - 2

HT-50



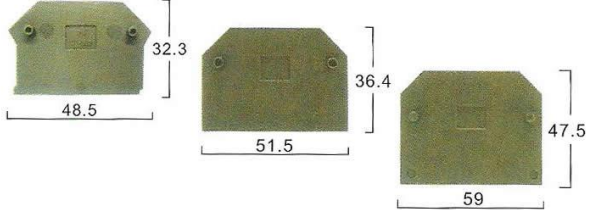
Terminal width	20.3 mm
Insulation stripping length	27 mm
Solid	16 - 50
Stranded	25 - 50
AWG	6 - 1/0

HT-95



Terminal width	25.5 mm
Insulation stripping length	30 mm
Solid	35 - 95
Stranded	35 - 95
AWG	2

EP-4 / EP-16 / EP-35 ( End Stops )

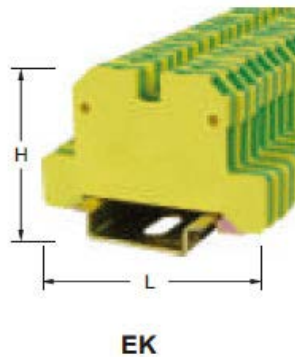


## Ordering Information

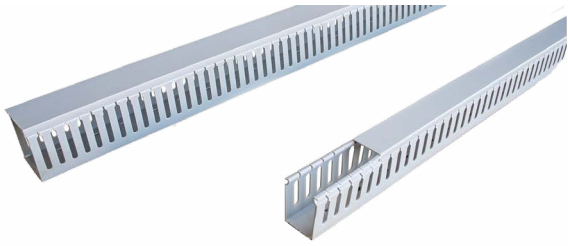
Order No	Model No	Product	Colour	Conductor Size	Rated Current A
208 992	EK - 2.5/35	DIN Terminal Station -Earth Terminal	Green/Yellow	0.2-2.5 mm <sup>2</sup>	24A
208 993	EK - 4/35	DIN Terminal Station -Earth Terminal	Green/Yellow	0.2-4 mm <sup>2</sup>	32A
208 992	EK - 6/35	DIN Terminal Station -Earth Terminal	Green/Yellow	0.2-6 mm <sup>2</sup>	41A
208 993	EK - 10/35	DIN Terminal Station -Earth Terminal	Green/Yellow	0.5-10 mm <sup>2</sup>	57A
208 992	EK - 16/35	DIN Terminal Station -Earth Terminal	Green/Yellow	0.5-16 mm <sup>2</sup>	76A

## Technical Details

Model	H	L
EK-2.5/35	44	56
EK-4/35	44	56
EK-6/35	44	56
EK-10/35	44	56
EK-16/35	44	56



# SLOTTED WIRING DUCTS



Slotted wiring ducts are used to manage the cables in switchboards, control panels and many other electrical installations.

It is use to do electrical installations neatly and easily to identify the cables.

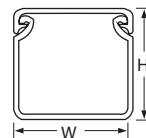
DIKEN-Taiwan 

## Ordering Information

Order No	Model No	Product	Dimensions	Colour	Groove Width
225 800	PDS - 1525	Slotted Wiring Duct	15x25mm	Grey	4mm
225 803	PDS - 2525	Slotted Wiring Duct	25x25mm	Grey	4mm
225 806	PDS-2545	Slotted Wiring Duct	25x45mm	Grey	4mm
225 812	PDS-3345	Slotted Wiring Duct	33x45mm	Grey	4mm
225 819	PDM - 4545	Slotted Wiring Duct	45x45mm	Grey	6mm
225 825	PDM - 6545	Slotted Wiring Duct	65x45mm	Grey	6mm
225 831	PDM-3365	Slotted Wiring Duct	33x65mm	Grey	6mm
225 834	PDM- 4565	Slotted Wiring Duct	45x65mm	Grey	6mm
225 840	PDM-6565	Slotted Wiring Duct	65x65mm	Grey	6mm
225 849	PDB - 6080	Slotted Wiring Duct	60x80mm	Grey	8mm
225 852	PDM-8080	Slotted Wiring Duct	80x80mm	Grey	6mm
225 865	PDB-100100	Slotted Wiring Duct	100x100mm	Grey	8mm

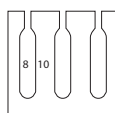
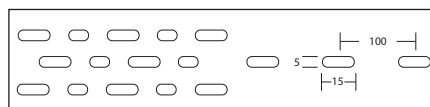
## Technical Details

Material: Rigid, PVC  
 Self-extinguishing  
 Length: 2M  
 Color: Gray

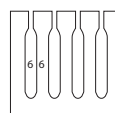


W: Over 72 mm

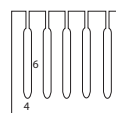
W: Under 65 mm



B: 8 mm



M: 6 mm



S: 4 mm



Heat shrinkable sleeves are used to identify and insulation of the busbars.

Heat shrinkable sleeves are available in both new color code ( Brown/Black/Grey/Blue) and old color code (Red/ Yellow/ Blue/ Black).

**DIKEN - Taiwan** 

## Ordering Information

Order No	Model No	Product	Size	Colour	Busbar Size
210 307	HS - 40	Heat Shrinking Sleeve	40mm	Brown	1" x 1/4"
210 308	HS - 50	Heat Shrinking Sleeve	50mm	Brown	1 1/2" x 3/8"
210 309	HS - 60	Heat Shrinking Sleeve	60mm	Brown	1 1/2" x 1/4"
210 310	HS - 70	Heat Shrinking Sleeve	70mm	Brown	2" x 1/4"
210 312	HS - 100	Heat Shrinking Sleeve	100mm	Brown	3" x 1/4"
210 327	HS - 40	Heat Shrinking Sleeve	40mm	Black	1" x 1/4"
210 328	HS - 50	Heat Shrinking Sleeve	50mm	Black	1 1/2" x 3/8"
210 329	HS - 60	Heat Shrinking Sleeve	60mm	Black	1 1/2" x 1/4"
210 330	HS - 70	Heat Shrinking Sleeve	70mm	Black	2" x 1/4"
210 332	HS - 100	Heat Shrinking Sleeve	100mm	Black	3" x 1/4"
210 347	HS - 40	Heat Shrinking Sleeve	40mm	Grey	1" x 1/4"
210 348	HS - 50	Heat Shrinking Sleeve	50mm	Grey	1 1/2" x 3/8"
210 349	HS - 60	Heat Shrinking Sleeve	60mm	Grey	1 1/2" x 1/4"
210 350	HS - 70	Heat Shrinking Sleeve	70mm	Grey	2" x 1/4"
210 352	HS - 100	Heat Shrinking Sleeve	100mm	Grey	3" x 1/4"
210 367	HS - 40	Heat Shrinking Sleeve	40mm	Blue	1" x 1/4"
210 368	HS - 50	Heat Shrinking Sleeve	50mm	Blue	1 1/2" x 3/8"
210 369	HS - 60	Heat Shrinking Sleeve	60mm	Blue	1 1/2" x 1/4"
210 370	HS - 70	Heat Shrinking Sleeve	70mm	Blue	2" x 1/4"
210 372	HS - 100	Heat Shrinking Sleeve	100mm	Blue	3" x 1/4"

210 387	HS - 40	Heat Shrinking Sleeve	40mm	Green	1" x 1/4"
210 388	HS - 50	Heat Shrinking Sleeve	50mm	Green	1 1/2" x 3/8"
210 389	HS - 60	Heat Shrinking Sleeve	60mm	Green	1 1/2" x 1/4"
210 390	HS - 70	Heat Shrinking Sleeve	70mm	Green	2" x 1/4"
210 392	HS - 100	Heat Shrinking Sleeve	100mm	Green	3" x 1/4"
210 407	HS - 40	Heat Shrinking Sleeve	40mm	Red	1" x 1/4"
210 408	HS - 50	Heat Shrinking Sleeve	50mm	Red	1 1/2" x 3/8"
210 409	HS - 60	Heat Shrinking Sleeve	60mm	Red	1 1/2" x 1/4"
210 410	HS - 70	Heat Shrinking Sleeve	70mm	Red	2" x 1/4"
210 410	HS - 100	Heat Shrinking Sleeve	100mm	Red	3" x 1/4"
210 427	HS - 40	Heat Shrinking Sleeve	40mm	Yellow	1" x 1/4"
210 429	HS - 60	Heat Shrinking Sleeve	60mm	Yellow	1 1/2" x 1/4"
210 430	HS - 70	Heat Shrinking Sleeve	70mm	Yellow	2" x 1/4"
210 432	HS - 100	Heat Shrinking Sleeve	100mm	Yellow	3" x 1/4"

## Technical Details

Material: Rigid Shrinkable PVC

Used for color distinction and insulation of busbar in control panel. To be shrinked by blower or hot water.

Maximum service temp: 80°C



Model No.	Lay Flat ØA	Convert To ØB	Shrinkable Range
HS - 40	40	25	22.0~22.0
HS - 50	50	32	28.0~28.0
HS - 60	60	38	33.0~33.0
HS - 70	70	44	37.0~37.0
HS - 100	100	63	55.0~55.0



Heat shrinkable tubes are used to identify the cables and used as insulation for the cables.

Heat shrinkable tubes are available in both new color code ( Brown/Black/Grey/Blue) and old color code (Red/ Yellow/ Blue/ Black).



## Ordering Information

Order No	Model No	Product	Size	Colour
208 204	HST - 2.5	Heat Shrinkable Tube	2.5 /1.25	Red
208 206	HST - 3.5	Heat Shrinkable Tube	3.5/1.75	Red
208 209	HST - 5	Heat Shrinkable Tube	5.0/2.5	Red
208 210	HST - 7	Heat Shrinkable Tube	7.0/3.5	Red
208 213	HST - 10	Heat Shrinkable Tube	10.0/5.0	Red
208 215	HST - 12	Heat Shrinkable Tube	12.0/6.0	Red
208 219	HST - 16	Heat Shrinkable Tube	16.0/8.0	Red
208 223	HST - 22	Heat Shrinkable Tube	22.0/11.0	Red
208 224	HST - 25	Heat Shrinkable Tube	25.0/12.5	Red
208 226	HST - 30	Heat Shrinkable Tube	30.0/15.0	Red
208 228	HST - 40	Heat Shrinkable Tube	40.0/20.0	Red
208 229	HST - 50	Heat Shrinkable Tube	50.0/25.0	Red
208 254	HST - 3.5	Heat Shrinkable Tube	2.5 /1.25	Yellow
208 256	HST - 5	Heat Shrinkable Tube	3.5/1.75	Yellow
208 259	HST - 7	Heat Shrinkable Tube	5.0/2.5	Yellow
208 260	HST - 10	Heat Shrinkable Tube	7.0/3.5	Yellow
208 263	HST - 12	Heat Shrinkable Tube	10.0/5.0	Yellow
208 265	HST - 16	Heat Shrinkable Tube	12.0/6.0	Yellow
208 269	HST - 22	Heat Shrinkable Tube	16.0/8.0	Yellow
208 273	HST - 25	Heat Shrinkable Tube	22.0/11.0	Yellow



208 274	HST - 12	Heat Shrinkable Tube	25.0/12.5	Yellow
208 276	HST - 16	Heat Shrinkable Tube	30.0/15.0	Yellow
208 278	HST - 22	Heat Shrinkable Tube	40.0/20.0	Yellow
208 279	HST - 25	Heat Shrinkable Tube	50.0/25.0	Yellow
208 304	HST - 12	Heat Shrinkable Tube	2.5 /1.25	Blue
208 306	HST - 16	Heat Shrinkable Tube	3.5/1.75	Blue
208 309	HST - 22	Heat Shrinkable Tube	5.0/2.5	Blue
208 310	HST - 25	Heat Shrinkable Tube	7.0/3.5	Blue
208 313	HST - 12	Heat Shrinkable Tube	10.0/5.0	Blue
208 315	HST - 16	Heat Shrinkable Tube	12.0/6.0	Blue
208 319	HST - 22	Heat Shrinkable Tube	16.0/8.0	Blue
208 323	HST - 25	Heat Shrinkable Tube	22.0/11.0	Blue
208 324	HST - 12	Heat Shrinkable Tube	25.0/12.5	Blue
208 326	HST - 16	Heat Shrinkable Tube	30.0/15.0	Blue
208 328	HST - 22	Heat Shrinkable Tube	40.0/20.0	Blue
208 329	HST - 25	Heat Shrinkable Tube	50.0/25.0	Blue
208 352	HST - 12	Heat Shrinkable Tube	1.5/0.75	Black
208 354	HST - 16	Heat Shrinkable Tube	2.5/1.25	Black
208 356	HST - 22	Heat Shrinkable Tube	3.5/1.75	Black
208 359	HST - 25	Heat Shrinkable Tube	5.0/2.5	Black
208 360	HST - 12	Heat Shrinkable Tube	7.0/3.5	Black
208 363	HST - 16	Heat Shrinkable Tube	10.0/5.0	Black
208 365	HST - 22	Heat Shrinkable Tube	12.0/6.0	Black
208 369	HST - 25	Heat Shrinkable Tube	16.0/8.0	Black
208 373	HST - 12	Heat Shrinkable Tube	22.0/11.0	Black
208 374	HST - 16	Heat Shrinkable Tube	25.0/12.5	Black
208 376	HST - 22	Heat Shrinkable Tube	30.0/15.0	Black
208 378	HST - 25	Heat Shrinkable Tube	40.0/20.0	Black
208 379	HST - 25	Heat Shrinkable Tube	50.0/25.0	Black

208 404	HST - 12	Heat Shrinkable Tube	2.5/1.25	Brown
208 406	HST - 16	Heat Shrinkable Tube	3.5/1.75	Brown
208 409	HST - 22	Heat Shrinkable Tube	5.0/2.5	Brown
208 410	HST - 25	Heat Shrinkable Tube	7.0/3.5	Brown
208 413	HST - 12	Heat Shrinkable Tube	10.0/5.0	Brown
208 415	HST - 16	Heat Shrinkable Tube	12.0/6.0	Brown
208 419	HST - 22	Heat Shrinkable Tube	16.0/8.0	Brown
208 423	HST - 25	Heat Shrinkable Tube	22.0/11.0	Brown
208 424	HST - 12	Heat Shrinkable Tube	25.0/12.5	Brown
208 426	HST - 16	Heat Shrinkable Tube	30.0/15.0	Brown
208 428	HST - 22	Heat Shrinkable Tube	40.0/20.0	Brown
208 429	HST - 25	Heat Shrinkable Tube	50.0/25.0	Brown
208 454	HST - 12	Heat Shrinkable Tube	2.5/1.25	Grey
208 456	HST - 16	Heat Shrinkable Tube	3.5/1.75	Grey
208 459	HST - 22	Heat Shrinkable Tube	5.0/2.5	Grey
208 460	HST - 25	Heat Shrinkable Tube	7.0/3.5	Grey
208 463	HST - 12	Heat Shrinkable Tube	10.0/5.0	Grey
208 465	HST - 16	Heat Shrinkable Tube	12.0/6.0	Grey
208 469	HST - 22	Heat Shrinkable Tube	16.0/8.0	Grey
208 473	HST - 25	Heat Shrinkable Tube	22.0/11.0	Grey
208 474	HST - 12	Heat Shrinkable Tube	25.0/12.5	Grey
208 476	HST - 16	Heat Shrinkable Tube	30.0/15.0	Grey
208 478	HST - 22	Heat Shrinkable Tube	40.0/20.0	Grey
208 479	HST - 25	Heat Shrinkable Tube	50.0/25.0	Grey
208 501	HST - 12	Heat Shrinkable Tube	Ø3.0	Yellow/Green
208 502	HST - 16	Heat Shrinkable Tube	Ø4.0	Yellow/Green
208 503	HST - 22	Heat Shrinkable Tube	Ø5.0	Yellow/Green
208 505	HST - 25	Heat Shrinkable Tube	Ø7.0	Yellow/Green
208 507	HST - 12	Heat Shrinkable Tube	Ø10.0	Yellow/Green
208 508	HST - 16	Heat Shrinkable Tube	Ø12.0	Yellow/Green
208 511	HST - 22	Heat Shrinkable Tube	Ø20.0	Yellow/Green
208 512	HST - 25	Heat Shrinkable Tube	Ø25.0	Yellow/Green
208 515	HST - 12	Heat Shrinkable Tube	Ø40.0	Yellow/Green
208 516	HST - 16	Heat Shrinkable Tube	Ø50.0	Yellow/Green

## Technical Details

HST Series radiation cross-linking low temperature resistance fire tube has function of excellent insulation, age-resistance and softness, has the characteristics of fire resistance and shrinkable temperature of 125°C, which can be done by high heat hair dryer.

They are widely used in communication, electronic, aviation and other fields for wiring insulation,

Item No .	Size	Dimension before shrinking (mm)	Dimension after shrinking (mm)	
			Max internal diameter	Wall thickness
HST-1.5	1.5/0.75	1.5±0.3	0.75±0.1	0.25±0.01
HST-2.5	2.5/1.25	2.5±0.3	1.25±0.1	0.25±0.01
HST-3.5	3.5/1.75	3.5±0.3	1.75±0.1	0.32±0.01
HST-5.0	5.0/2.5	5.0±0.3	2.5±0.2	0.46±0.01
HST-7	7.0/3.5	7.0±0.4	3.5±0.2	0.46±0.01
HST-10	10.0/5.0	10.0±0.4	5.0±0.2	0.52±0.01
HST-12	12.0/6.0	12.0±0.4	6.0±0.3	0.24±0.01
HST-16	16.0/8.0	16.0±0.5	8.0±0.3	0.62±0.01
HST-22	22.0/11.0	22.0±0.5	11.0±0.3	0.75±0.02
HST-25	25.0/12.5	25.0±0.8	12.5±1.0	0.80±0.02
HST-30	30.0/15.0	30.0±0.8	15.0±1.0	0.82±0.02
HST-40	40.0/20.0	40.0±1.5	20.0±1.0	0.82±0.02
HST-50	50.0/25.0	50.0±1.5	25.0±1.0	0.82±0.02

Yellow & green shrinkable busing is processed and manufactured with excellent green and yellow polyolefin materials.

When the products are shaped, they are cross linked and expanded continuously with electronic accelerator.

The products are widely used in the marking of electrical and earth cables.

- Features: application: -55°C ~ 125°C; Initial shrinking temperature: 70°C; Full shrinking temperature: 125°C.
- Softness, flame retardation, bright and durable color.
- Able to shrink when heated with oven or hot air gun.

Item No .	Size	Dimension before shrinking (mm)		Dimension after shrinking (mm)
		Internal diameter	Max internal diameter	Wall Thikness
HTD-3	3.0/1.5	3.0±0.3	1.5±0.1	0.30±0.01
HTD-4	4.0/2.0	4.0±0.3	2.0±0.1	0.34±0.01
HTD-5	5.0/2.5	5.0±0.3	2.5±0.2	0.46±0.01
HTD-7	7.0/3.5	7.0±0.4	3.5±0.2	0.46±0.01
HTD-10	10.0/5.0	10.0±0.4	5.0±0.2	0.52±0.01
HTD-12	12.0/6.0	12.0±0.4	6.0±0.3	0.52±0.01
HTD-20	20.0/10.0	20.0±0.5	10.0±0.3	0.70±0.02
HTD-25	25.0/12.5	25.0±0.8	12.5±1.0	0.75±0.02
HTD-40	40.0/20.0	40.0±1.5	20.0±1.0	0.82±0.02
HTD-50	50.0/25.0	50.0±1.5	25.0±1.0	0.82±0.02

## SPIRAL WRPPING BANDS



Spiral wrapping bands are used to protect the cable from sharp edges.

Different sizes are available in white colour to wrap different sizes of cable & cable bunches.

**RIPE - Hong Kong ripe**

### Ordering Information

Order No	Model No	Product	Cable Range mm
202 100	SWB - 3	Spiral Wrapping Band	15 - 18
202 101	SWB - 6	Spiral Wrapping Band	10 - 50
202 102	SWB - 8	Spiral Wrapping Band	15 - 60
202 103	SWB - 10	Spiral Wrapping Band	20 - 60
202 104	SWB - 12	Spiral Wrapping Band	20 - 65
202 105	SWB - 15	Spiral Wrapping Band	20 - 70
202 106	SWB - 19	Spiral Wrapping Band	25 - 100
202 107	SWB - 24	Spiral Wrapping Band	30 - 130
202 108	SWB - 30	Spiral Wrapping Band	

### Technical Details

Material: PE.

Color of polyethylene spiral wrap tubing: White

Usage of PE spiral wrapping bands: fix one end with a safety first, then circle the wires clockwise to make them tighten.

ITEM No.	I.D mm	Outside Diameter mm	Pitch mm	Wrapping Range mm
HT -3	1.5	3	4	
HT-6	4	6	7	4x50
HT-8	6	8	10.8	6X60
HT-10	7.5	10	11.4	7.5X60
HT-12	9	12	13.9	9X65
HT-15	12	15	15	12X70
HT-19	15	19	18.2	15X100
HT-24	20	24	19.6	20X130
HT-30	26	30	23.5	



Cable glands are protect the cables from sharp edges and help to maintain the IP rating of the encloures.

Cable glands are use to take the cables in to the enclosures in professional electrical,telecommunication, data and many other installations.

Available different types of cable glands in different material for different applications.



## Ordering Information

Order No	Model No	Product	Cable Range mm	H mm	GL (mm)	Outer Dia(mm)
202 130	NCG-12	Nylon Cable Glands - Metric	3 - 6.5	7.9	13.3	12
202 131	NCG-16	Nylon Cable Glands - Metric	5 - 10	15	15.8	16
202 132	NCG-20	Nylon Cable Glands - Metric	6 - 12	15	18.4	20
202 133	NCG-25	Nylon Cable Glands - Metric	13 - 18	15	22.3	25
202 134	NCG-32	Nylon Cable Glands - Metric	18 - 25	15	24.8	32
202 135	NCG-40	Nylon Cable Glands - Metric	25 - 32	18	31.6	40
202 136	NCG-50	Nylon Cable Glands - Metric	32 - 38	18	-	50
202 137	NCG-63	Nylon Cable Glands - Metric	37 - 44	18	-	63
202 250	PG 7	Nylon Cable Glands - PG Series	3.5 - 6	21	8	15
202 251	PG 9	Nylon Cable Glands - PG Series	4.0 - 8.0	21	8	19
202 252	PG 11	Nylon Cable Glands - PG Series	5.0 - 10.0	25	8	22
202 253	PG 13.5	Nylon Cable Glands - PG Series	6.0 - 12.0	27	9	24
202 254	PG 16	Nylon Cable Glands - PG Series	10.0 - 14.0	28	10	27
202 255	PG 19	Nylon Cable Glands - PG Series	12 - 16	31	11	33
202 256	PG 21	Nylon Cable Glands - PG Series	13.0 - 18.0	39	11	42
202 257	PG 25	Nylon Cable Glands - PG Series	16 - 21	48	13	53
202 258	PG 27	Nylon Cable Glands - PG Series	-	49	13	60
202 259	PG 29	Nylon Cable Glands - PG Series	18.0 - 25.0	49	14	65
202 260	PG 36	Nylon Cable Glands - PG Series	22.0 - 32.0	55	19	71

202 261	PG 42	Nylon Cable Glands - PG Series	30.0 - 38.0	-	18	60
202 262	PG 48	Nylon Cable Glands - PG Series	34.0 - 44.0	-	20	68
202 263	PG 63	Nylon Cable Glands - PG Series	42 - 50	-	-	-
202 282	PG11	Brass Cable Gland - PG Series	5 - 10	22	6	20
202 283	PG13.5	Brass Cable Gland - PG Series	6 - 12	24	6.5	22
202 284	PG16	Brass Cable Gland - PG Series	10 - 14	24	6.5	24
202 286	PG21	Brass Cable Gland - PG Series	13 - 18	24	7	30
202 287	PG25	Brass Cable Gland - PG Series	16 - 21	-	-	-
202 289	PG 29	Brass Cable Gland - PG Series	18 - 25	29	8	40
202 290	PG 36	Brass Cable Gland - PG Series	22 - 32	35	8	50
202 291	PG42	Brass Cable Gland - PG Series	32 - 38	37	9	57
202 292	PG48	Brass Cable Gland - PG Series	37 - 44	38	10	64

## Technical Details

Material : NYLON 66 UL Listed, IP68.

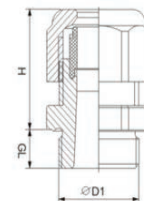
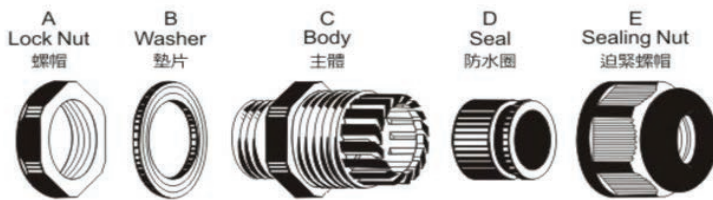
Sealing Nut of metric cable gland: NBR, EPDM.

Color of metric gland: White

Usage : Install from inside and outside of the hole, and screw the sealing nut to seal the hole.

Application temperature : -40°C-100°C the item can also endure 120°C instantly.

Application sealing the electrical box connector hole, wire installs to inside and keep dust and water out.



## Nylon Cable Glands - PG Series

Material : NYLON 66 UL Listed, IP68

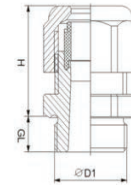
Sealing Nut of pg cable gland: NBR, EPDM

Color : White.

Usage : Install from inside and outside of hole, and screw the sealing nut, to seal the hole.

Application temperature : -40°C -100°C, the item can also endure 120°C instantly

Application : sealing the electrical box connector hole, wire install to inside and keep dusty and water out.



## Brass Cable Gland - PG Series

Material : Nickel-plated Brass.

Fixture Pack of brass gland: NYLON 66 UL Listed, IP68.

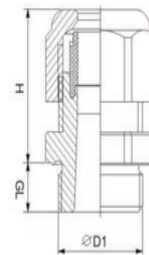
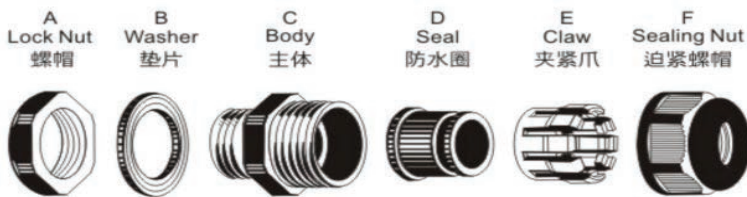
Sealing Nut : NBR, EPDM.

Color : Nickl colour.

Usage : Install from inside and outside of the hole, and screw the sealing nut, to seal the hole.

Application temperature: -40°C-100°C the item can also endure 120°C instantly.

Application : sealing the electrical box connector hole, wire installs to inside and keep dust and water out.





## Ordering Information

Order No	Model No	Product
218 201	BW-16 L	BW Type Brass Cable Gland KIT
218 202	BW-20 S	BW Type Brass Cable Gland KIT
218 203	BW-20 L	BW Type Brass Cable Gland KIT
218 204	BW-25 S	BW Type Brass Cable Gland KIT
218 205	BW-25 L	BW Type Brass Cable Gland KIT
218 206	BW-32 S	BW Type Brass Cable Gland KIT
218 207	BW-32 L	BW Type Brass Cable Gland KIT
218 208	BW-40 S	BW Type Brass Cable Gland KIT
218 209	BW-40 L	BW Type Brass Cable Gland KIT
218 210	BW-50 S	BW Type Brass Cable Gland KIT
218 211	BW-50 L	BW Type Brass Cable Gland KIT
218 212	BW-63 S	BW Type Brass Cable Gland KIT
218 213	BW-63 L	BW Type Brass Cable Gland KIT
218 214	BW-75 S	BW Type Brass Cable Gland KIT
218 215	BW-75 L	BW Type Brass Cable Gland KIT
218 216	BW-90 S	BW Type Brass Cable Gland KIT
218 217	BW-90 L	BW Type Brass Cable Gland KIT
218 221	CW - 16 L	CW Type Brass Cable Gland KIT
218 222	CW-20 S	CW Type Brass Cable Gland KIT
218 223	CW-20 L	CW Type Brass Cable Gland KIT
218 224	CW-25 S	CW Type Brass Cable Gland KIT
218 225	CW-25 L	CW Type Brass Cable Gland KIT
218 226	CW-32 S	CW Type Brass Cable Gland KIT
218 227	CW-32 L	CW Type Brass Cable Gland KIT
218 228	CW-40 S	CW Type Brass Cable Gland KIT
218 229	CW-40 L	CW Type Brass Cable Gland KIT
218 230	CW-50 S	CW Type Brass Cable Gland KIT

202 258	CW-50 L	CW Type Brass Cable Gland KIT
202 258	CW-63 S	CW Type Brass Cable Gland KIT
202 258	CW-63 L	CW Type Brass Cable Gland KIT
202 258	CW-75 S	CW Type Brass Cable Gland KIT
202 258	CW-75 L	CW Type Brass Cable Gland KIT
202 258	CW-90 S	CW Type Brass Cable Gland KIT
202 258	CW-90 L	CW Type Brass Cable Gland KIT

## Technical Details

### BW Type Brass Cable Gland KIT

#### APPLICATION :

For use with an armoured or braided cable, provides mechanical cable retention and electrical continuity via armoured wire termination. These Glands are mainly used in dry and indoor conditions.

#### DESIGN FEATURES :

3 part armour lock with cone and lock ring provided for additional grip to the armour.

Material	:	Brass as per IS 319
Plating	:	Nickel Standard Chrome on request
Entry Threads	:	Metric Standard Also available in BSC/PG/NPT/BSP/ET
Sealing Rubber Ring	:	Nitrile/Neoprene/Natural
Gland Standard	:	BS 6121
Ingress Protection	:	IP3X
Series	:	HBW

Product code	Cable Dimensions Accommodate		Gland Dimensions				
	Under Armour Dia. A-Max. mm	Overall Dia. B Max. mm	ISO Entry Thread		Approx length from shoulder F mm	Hexagone Size	
			Dia D mm	Length E mm		G mm	H mm
HCW – 16 S	8	12	M 16	9	20	20	22
HCW – 16 L	8.6	13.5	M 16	9	20	20	22
HCW – 20 S	12.3	17	M 20	9	20	22	24
HCW – 20 L	14.3	20	M 20	9.5	20	25	27
HCW – 25 S	19	23.25	M 25	9.5	20	31	34
HCW – 25 L	20.4	27	M 25	9.5	22	33.5	37
HCW – 32 S	23.5	28.5	M 32	9.5	22	35	38.5
HCW – 32 L	26.5	33.5	M 32	9.5	25	40	45

HCW – 40 S	31	37.5	M 40	12.5	25	44.5	49
HCW – 40 L	33	41.5	M 40	12.5	25	48.5	54
HCW – 50 S	39.5	48	M 50	12.5	28	56.5	63.5
HCW – 50 L	44	54	M 50	12.5	30	61	68
HCW – 63 S	50.5	60.5	M 63	14	33	69.5	77
HCW – 63 L	56	65	M 63	14	33	75.5	84.5
HCW – 75 S	62.7	72	M 75	14	40	83.5	93
HCW – 75 L	67.5	78.5	M 75	14	40	89.5	99
HCW – 90 S	75	85	M 90	20	48	100	110
HCW – 90 L	78	88.5	M 90	20	48	102	115

### CW Type Brass Cable Gland KIT

#### APPLICATION :

For use with armoured or braided cable. Provides environmental seal on the cable outer sheath. Also provides mechanical cable retention and electrical continuity via armoured wire termination. These Glands are mainly used in outdoor and indoor conditions.

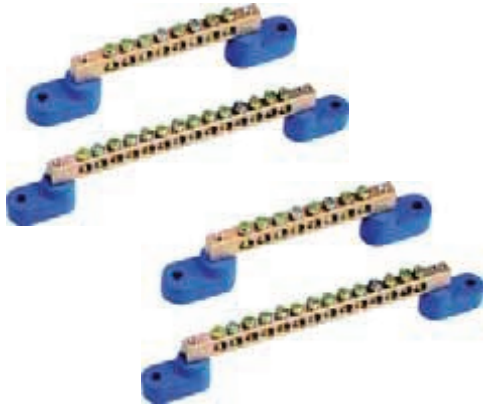
#### DESIGN FEATURES :

4 part armour lock with cone and lock ring provided for additional grip to the armour.

#### TECHNICAL DATA :

Material	:	Brass as per IS 319
Plating	:	Nickel Standard Chrome on request
Entry Threads	:	Metric Standard Also available in BSC/PG/NPT/BSP/ET
Sealing Rubber Ring	:	Nitrile/Neoprene/Natural
Gland Standard	:	BS 6121
Ingress Protection	:	IP66
Series	:	HCW

Product code	Cable Dimensions Accommodate		Gland Dimensions				
	Under Armour Dia. A-Max. mm	Overall Dia. B Max. mm	ISO Entry Thread		Approx length from shoulder F mm	Hexagone Size	
			Dia D mm	Length E mm		G mm	H mm
HCW – 16 S	8	11	M 16	10	40	20	23
HCW – 16 L	9	13	M 16	10	40	20	23
HCW – 20 S	12.5	15	M 20	10	42	22	24
HCW – 20 L	14.3	19	M 20	10	42	26	29
HCW – 25 S	14.8	23.6	M 25	10	44	31	34
HCW – 25 L	20.7	27	M 25	10	44	34.9	38
HCW – 32 S	26.5	31	M 32	10	46	41	45.7
HCW – 32 L	27	32.5	M 32	10	46	41.25	46
HCW – 40 S	31.7	37	M 40	13.5	50	55	50
HCW – 40 L	33.25	39	M 40	13.5	50	49	54
HCW – 50 S	39.8	4	M 50	14	57	56	62.7
HCW – 50 L	44	50	M 50	14	57	62.3	69.5
HCW – 63 S	50.5	59	M 63	14	70	72.5	81
HCW – 63 L	56	62	M 63	14	61	76	85
HCW – 75 S	62.7	71	M 75	15	65	85	95
HCW – 75 L	67.9	77.5	M 75	15	66	91	103
HCW – 90 S	76	84	M 90	20	80	100	110
HCW – 90 L	78	89	M 90	20	82	103	114



Neutral and Earth links are used to terminate neutral & earth cable in electrical switchboards.

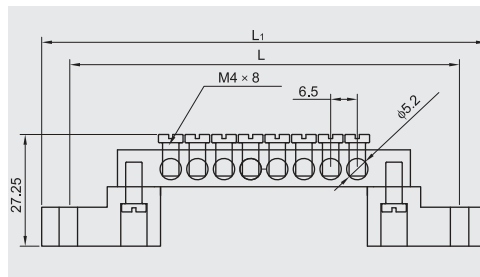
Available in different ways & sizes.

RIPE - Hong Kong **ripe**

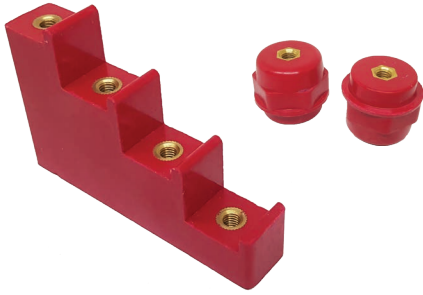
## Ordering Information

Order No	Model No	Product	No. of ways
224 802	S019 - 0609	Brass Terminal Block	8 WAY
224 803	S019 - 0609	Brass Terminal Block	10 WAY
224 806	S019 - 0609	Brass Terminal Block	16 WAY
224 870	S043	Brass Bar 6*9 mm	10 WAYS
224 877	S043	Brass Bar 6*9 mm	24 WAYS

## Technical Details



Way	Mounting Dimensions (L)mm	Overall Dimensions(L1)mm	Sectioncross of brass
4	69.5	82.5 x 13	6 x 9
6	82.5	95.5 x 13	6 x 9
8	95.5	108.5 x 13	6 x 9
10	108.5	121.5 x 13	6 x 9
12	121.5	134.5 x 13	6 x 9
14	134.5	147.5 x 13	6 x 9
16	147.5	160.5 x 13	6 x 9



Available different type of busbar holders for different mounting systems.

RIPE - Hong Kong **ripe**

## Ordering Information

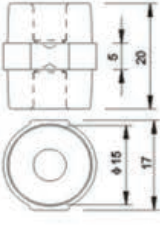
Order No	Model No	Product	Height	Bolt Size	Busbar Size	No of Steps	Groove Wide
238 101	SM25 M6	Insulators - SM	25	6			
238 103	SM30 M8	Insulators - SM	30	8			
238 104	SM35 M8	Insulators - SM	35	8			
238 105	SM40 M8	Insulators - SM	40	8			
238 106	SM45 M8	Insulators - SM	45	8			
238 107	SM51 M8	Insulators - SM	51	8			
238 116	SM51 M10	Insulators - SM	51	10			
238 108	SM60 M8	Insulators - SM	60	8			
238 115	SM76 M8	Insulators - SM	76	8			
238 121	CT4 - 20	Step Insulator			20	4	
238 130	CT5 - 25	Step Insulator			25	5	
238 131	CT4 - 30	Step Insulator			30	4	
238 132	CT4 - 40	Step Insulator			40	4	
238 150	EL - 130	EL type busbar supports					7
238 153	EL - 270	EL type busbar supports					7 & 12
238 156	EL - 295	EL type busbar supports					6.3 & 11
238 159	EL - 409	EL type busbar supports					6.3 & 11

## Technical Details

Operating Temperature - -40 ~ +140  
 Insert - Brass, Steel with Zn coating  
 Material - BMC (Bough Moulding Compound)  
 SMC (Sheet Moulding Compound)


# Drawings -

## Insulators - SM



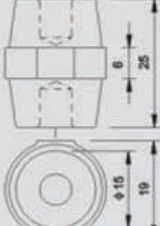
**SM-20 外观及尺寸(mm)**

伸缩强度(LBS)	300
Tensile strength(LBS)	300
耐压(KV)	5
Voltage withstand(KV)	5
扭矩(FT LBS)	4
Torgue strength(FT LBS)	4
螺纹(mm)	5
screw(mm)	5
螺纹深度(mm)	7
screw depth(mm)	7



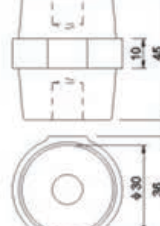
**SM-40 外观及尺寸(mm)**

伸缩强度(LBS)	650
Tensile strength(LBS)	650
耐压(KV)	12
Voltage withstand(KV)	12
扭矩(FT LBS)	12
Torgue strength(FT LBS)	12
螺纹(mm)	8
screw(mm)	8
螺纹深度(mm)	11
screw depth(mm)	11



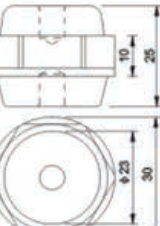
**SM-25S 外观及尺寸(mm)**

伸缩强度(LBS)	400
Tensile strength(LBS)	400
耐压(KV)	6
Voltage withstand(KV)	6
扭矩(FT LBS)	5
Torgue strength(FT LBS)	5
螺纹(mm)	6
screw(mm)	6
螺纹深度(mm)	8
screw depth(mm)	8



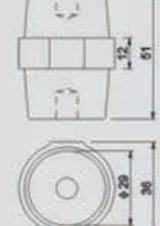
**SM-45 外观及尺寸(mm)**

伸缩强度(LBS)	1000
Tensile strength(LBS)	1000
耐压(KV)	14
Voltage withstand(KV)	14
扭矩(FT LBS)	20
Torgue strength(FT LBS)	20
螺纹(mm)	8
screw(mm)	8
螺纹深度(mm)	11
screw depth(mm)	11



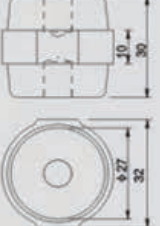
**SM-25 外观及尺寸(mm)**

伸缩强度(LBS)	500
Tensile strength(LBS)	500
耐压(KV)	6
Voltage withstand(KV)	6
扭矩(FT LBS)	6
Torgue strength(FT LBS)	6
螺纹(mm)	6
screw(mm)	6
螺纹深度(mm)	9
screw depth(mm)	9



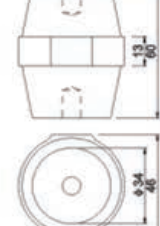
**SM-51 外观及尺寸(mm)**

伸缩强度(LBS)	1000
Tensile strength(LBS)	1000
耐压(KV)	15
Voltage withstand(KV)	15
扭矩(FT LBS)	20
Torgue strength(FT LBS)	20
螺纹(mm)	8
screw(mm)	8
螺纹深度(mm)	14
screw depth(mm)	14



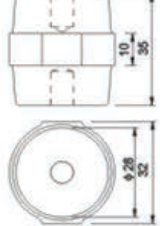
**SM-30 外观及尺寸(mm)**

伸缩强度(LBS)	550
Tensile strength(LBS)	550
耐压(KV)	8
Voltage withstand(KV)	8
扭矩(FT LBS)	8
Torgue strength(FT LBS)	8
螺纹(mm)	8
screw(mm)	8
螺纹深度(mm)	11
screw depth(mm)	11



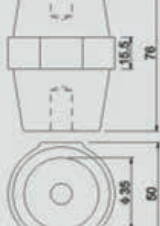
**SM-60 外观及尺寸(mm)**

伸缩强度(LBS)	1200
Tensile strength(LBS)	1200
耐压(KV)	20
Voltage withstand(KV)	20
扭矩(FT LBS)	35
Torgue strength(FT LBS)	35
螺纹(mm)	10
screw(mm)	10
螺纹深度(mm)	15
screw depth(mm)	15



**SM-35 外观及尺寸(mm)**

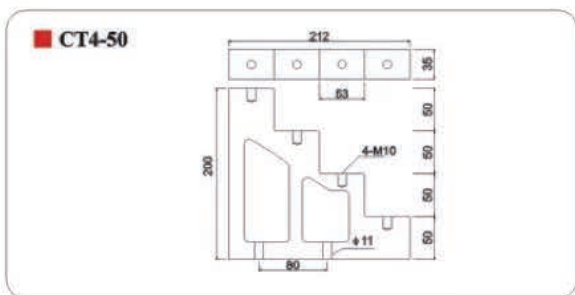
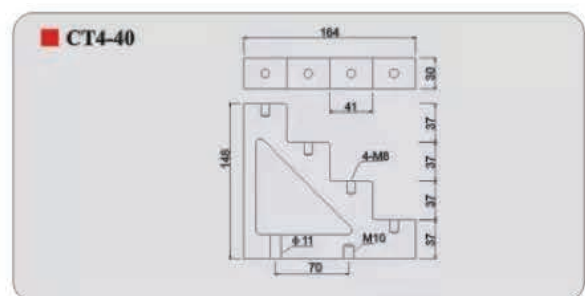
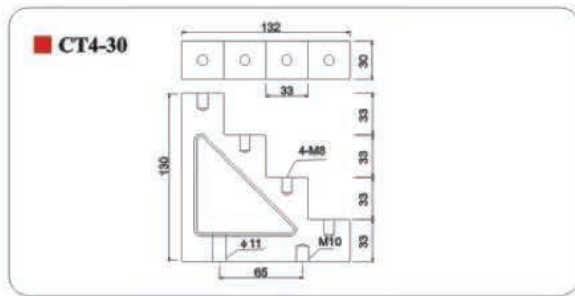
伸缩强度(LBS)	600
Tensile strength(LBS)	600
耐压(KV)	10
Voltage withstand(KV)	10
扭矩(FT LBS)	10
Torgue strength(FT LBS)	10
螺纹(mm)	8
screw(mm)	8
螺纹深度(mm)	11
screw depth(mm)	11



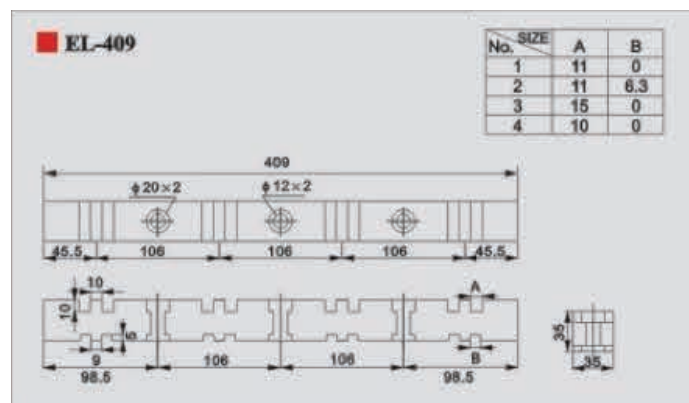
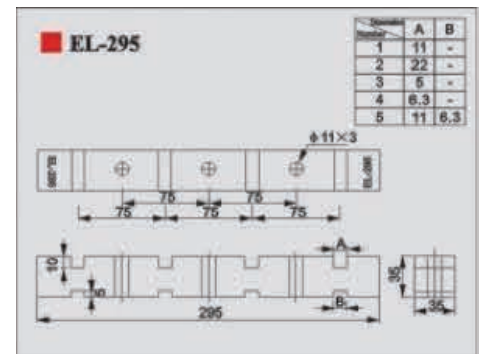
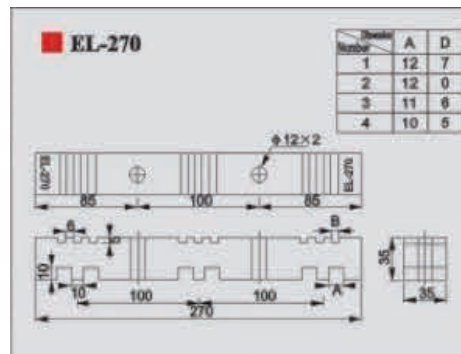
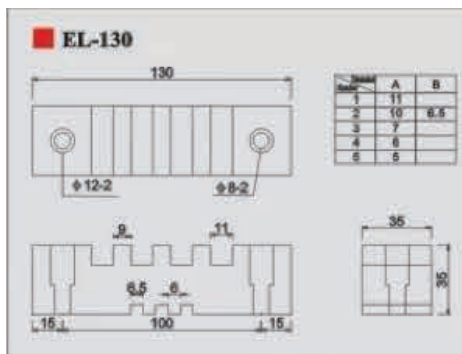
**SM-76 外观及尺寸(mm)**

伸缩强度(LBS)	1500
Tensile strength(LBS)	1500
耐压(KV)	25
Voltage withstand(KV)	25
扭矩(FT LBS)	40
Torgue strength(FT LBS)	40
螺纹(mm)	10
screw(mm)	10
螺纹深度(mm)	20
screw depth(mm)	20

## Step Insulator

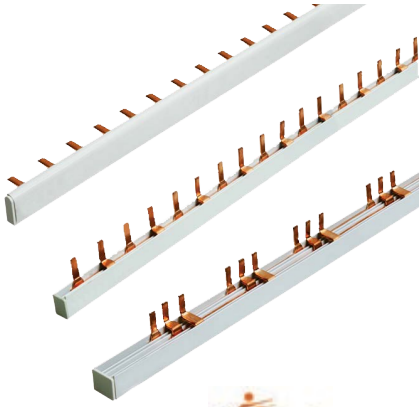


## EL type busbar supports





## COMB BUSBARS



Comb busbars are used for MCB wiring. It is important to use correct thickness of comb busbars to maintain current carrying capacity.

RIPE - Hong Kong **ripe**

### Ordering Information

Order No	Model No	Product	Poles	Ways	Current	Type
220 520	CBB - P -1	Comb Busbars	1	56	63A	Pin type
220 521	CBB - P -2	Comb Busbars	2	27	63A	Pin type
220 522	CBB - P -3	Comb Busbars	3	18	63A	Pin type
220 523	CBB - P -4	Comb Busbars	4	14	63A	Pin type
220 532	CBB - F-3	Comb Busbars	3	18	63A	Fork type



Flexible conduits are used to protect the cables in electrical installations.

Available suitable conduit glands for flexible conduits to do proper installations.

**RIPE - Hong Kong** ripe

### Ordering Information

Order No	Model No	Product	Size
202 501		PE Flexible conduit	OD - 13mm
202 504		PE Flexible conduit	OD - 20mm
202 505		PE Flexible conduit	OD - 25mm
202 507		PE Flexible conduit	OD - 32mm
202 509		PE Flexible conduit	OD - 50mm
202 521		Flexible conduit adapters	OD - 13mm
202 524		Flexible conduit adapters	OD - 20mm
202 525		Flexible conduit adapters	OD - 25mm
202 527		Flexible conduit adapters	OD - 32mm

### Technical Details

**Product material:** PA(polymide)

**Specification of thread:** Metric, thread/PG thread.

**Working temperature:** -40°C ~ + 100°C.

**Color:** Black

**Property:** Special design with inner locking buckle making the mounting and dismounting done by simple plugging or pulling without using tools.

AG outer diameter	GL (mm)	H (mm)	Flexible conduit size (mm)
PG 7	8.5	22.5	10
PG 9	8.5	23	13
PG 11	10	25	15.8
PG 13.5	12	25	18.5
PG 16	12	28	21.2
PG 21	12	31	28.5
PG 29	12	33	34.5
PG 36	13.5	35.5	42.5
PG 48	15	39	54.5
M12 x 1.5	8.5	22.5	10
M16 x 1.5	8.5	23	13
M18 x 1.5	10	25	15.8
M20 x 1.5	12	25	18.5
M22 x 1.5	12	28	21.2
M24 x 1.5	12	31	28.5
M32 x 1.5	12	33	34.5
M40 x 1.5	13.5	35.5	42.5
M63 x 1.5	15	39	54.5

**Product material:** PE6 polyethylene

**Working temperature:** -30°C ~ + 100°C . +120°C can be reached but kept only for a short time

**Structure:** Wavy shape both interiorly and exteriorly

**Color:** Black.

**Property:** Good flexibility, smooth and bright surface, chemical corrosion resistant

**Application:** It can be used in machineries, electric equipment, foodstuff machineries, automatic meter and gauges, motors, protecting the cables from abrasion and providing insulation to wires and cable.

**How to use:** Insert the wires and cables into the pipe and fit respective types of flexible joints before using.

Item No.	Specification for flexible pipe	Inner diameter x outer diameter (mm)	Curved radius (mm)
PE- 10.0	AD 10.0	6.5 x 10.0	16
PE- 11.6	AD 11.6	8.0 x 11.6	16
PE- 13.0	AD 13.0	10.0 x 13.0	20
PE- 15.8	AD 15.8	12.0 x 15.8	30
PE- 18.5	AD 18.5	14.3 x 18.5	40
PE- 21.2	AD 21.2	17.0 x 21.2	45
PE- 25.0	AD 25.0	20.0 x 25.0	45
PE- 28.5	AD 28.5	23.0 x 28.5	50
PE- 34.5	AD 34.5	29.0 x 34.5	60
PE- 42.5	AD 42.5	36.0 x 42.5	70
PE- 54.5	AD 54.5	48.0 x 54.5	90



Grommets are used to protect the cables from sharp edges and closed grommets are used to close opened punched holes on the enclosures.

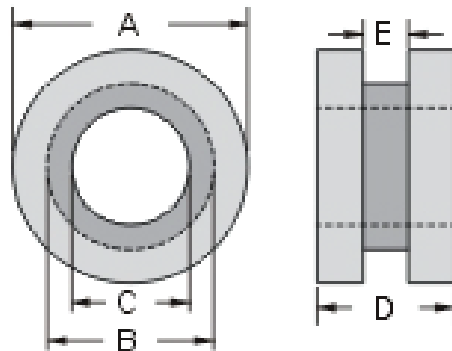
Easy to fix and comes in black colour.  
Material is PVC.

**DIKEN-Taiwan** 

**Ordering Information**

Order No	Model No	Product	Overall Dia	Panel Hole Dia	Opening Dia
210 600	GM - 0603	Grommet - Open	8.5	6.0	3.0
210 604	GM - 1410	Grommet - Open			
210 605	GM - 2015	Grommet - Open	23.0	20.0	15.0
210 606	GM - 2518	Grommet - Open	31.0	25.0	18.0
210 607	GM - 3225	Grommet - Open			
210 610	GMC - 0603	Grommet - Closed	8.5	6.0	3.0
210 611	GMC - 0705	Grommet - Closed	10.2	7.2	5.0
210 612	GMC - 1006	Grommet - Closed	13.3	10.0	6.4
210 615	GMC - 2015	Grommet - Closed	23.0	20.0	15.0
210 616	GMC - 2518	Grommet - Closed	31.0	25.0	18.0
210 617	GMC - 3225	Grommet - Closed			

**Technical Details**



Item No.		A mm	B mm	C mm	D mm	E mm
Open	Close					
GM- 0603	GMC- 0603	8.5	6	3	4.7	1.7
GM- 0705	GMC- 0705	10.2	7.2	5	4.7	1.7
GM- 1006	GMC- 1006	13.3	10	6.4	6.5	1.7
GM- 1410	GMC- 1410	19.5	13.9	10.5	6.4	3.4
GM- 2015	GMC- 2015	23.7	20.1	15.5	6.1	1.7
GM- 2518	GMC- 2518	29.9	25.1	18.9	7.2	1.5
GM- 3225	GMC- 3225	38.1	31.7	25	7.8	1.5



Movable bushing are used to protect the cables from sharp edges and can fix in any shape.

DIKEN - Taiwan 

### Ordering Information

Order No	Model No	Product	T	Max. Chasis Thickness
210 630	MB - 010	Movable bushings	1.0	1.0
210 631	MB - 016	Movable bushings	1.6	1.0 - 1.6
210 632	MB - 020	Movable bushings	2.0	1.6 - 2.0
210 633	MB - 024	Movable bushings	2.4	2.0 - 2.4
210 634	MB - 032	Movable bushings	3.2	2.4 - 3.2
210 635	MB - 045	Movable bushings	4.5	3.2 - 4.5

### Technical Details

Material: PE, NYLON (NATURAL color). Nylon product has more flexibility and better adhesion.

- Usage: Cut to fit any hole sizes for cords, wires, cables protection against damage from sharp panel edges.
- Function: Wires and cables protection and insulation.
- Advantage: Flexible, high adhesion, smooth surface.

Part No.	T	Max. chassis Thickness	Material
MB - 010	1.0	1.0	PE
MB - 012	1.2	1.0 - 1.2	
MB - 016	1.6	1.0 - 1.6	
MB - 020	2.0	1.6 - 2.0	
MB - 024	2.4	2.0 - 2.4	
MB - 032	3.2	2.4 - 3.2	
MB - 045	4.5	3.2 - 4.5	





Different type of wiring connectors are available for different electrical installations.

RIPE - Hong Kong **ripe**

### Ordering Information

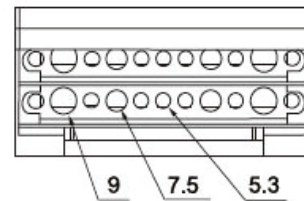
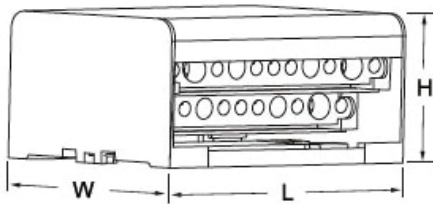
Order No	Model No	Product	Nos of rows	Holes Sizes mm
208 780	VC - 207	Modular Distribution Blocks	2rows	2xØ7.5
208 782	VC - 211	Modular Distribution Blocks	2rows	2xØ7.5
208 785	VC - 215	Modular Distribution Blocks	2rows	2xØ7.5, 2xØ9.0
208 788	VC - 407	Modular Distribution Blocks	4rows	5xØ5.3
208 790	VC - 411	Modular Distribution Blocks	4rows	7xØ5.3
208 764	VC - 415	Modular Distribution Blocks	4rows	2xØ7.5

### Technical Details

Connection with or without ferrules

- Supplied with insulated back plate and transparent protective front cover, self-extinguishing
- Mounting methods:
  1. Fix on din-rail
  2. On plate with 2 screws
- When installing under a front plate, a blanking plate can be clipped onto the front plate
- Insulation protection each bar
- Each bar can be labelled using cab 3TM
- Conform to standard EN60947-1
- ICC:20kA peak

Item No.	Bus Bar Spec.	No. of Bus Bar	Conductors with starfix ferrules X-section (mm <sup>2</sup> )	Cond. W/ out ferr. X-section (mm <sup>2</sup> )	Dimensions (L×W×H) (mm)
VC-207	5×φ5.3mm 2×φ7.5mm	2	1.5 to 6 6 to 16	2.5 to 6 10 to 25	65×42×50
VC-211	7×φ5.3mm 2×φ7.5mm 2×φ8.5mm	2	1.5 to 6 6 to 16 10 to 16	2.5 to 6 10 to 25 10 to 35	100×42×50
VC-215	11×φ5.3mm 2×φ7.5mm 2×φ8.5mm	2	1.5 to 6 6 to 16 10 to 16	2.5 to 6 10 to 25 10 to 35	133×42×50
VC-407	5×φ5.3mm 2×φ7.5mm	4	1.5 to 6 6 to 16	2.5 to 6 10 to 25	65×88×50
VC-411	7×φ5.3mm 2×φ7.5mm 2×φ8.5mm	4	1.5 to 6 6 to 16 10 to 16	2.5 to 6 10 to 25 10 to 35	100×88×50
VC-415	11×φ5.3mm 2×φ7.5mm 2×φ8.5mm	4	1.5 to 6 6 to 16 10 to 16	2.5 to 6 10 to 25 10 to 35	133×88×50



**RIPE - Hong Kong** 

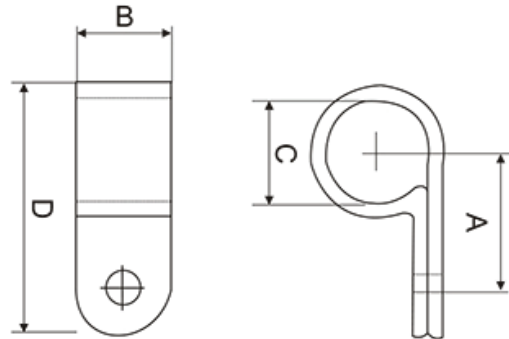
## Ordering Information

Order No	Model No	Product	Size in inch	Size in mm
201 570	HT-1/8R	Cable clamp - R Type	1/8"	3.2mm
201 571	HT-3/16R	Cable clamp - R Type	3/16"	4.8mm
201 572	HT-1/4R	Cable clamp - R Type	1/4"	6.35mm
201 573	HT-5/16R	Cable clamp - R Type	5/16"	7.9mm
201 574	HT-3/8R	Cable clamp - R Type	3/8"	9.5mm
201 575	HT-1/2R	Cable clamp - R Type	1/2"	12.7mm
201 577	HT-3/4R	Cable clamp - R Type	3/4"	19.4mm

## Technical Details

Material: Nylon 66 94V-2 agreed by UL

Usage: Put cable in fix by screw



Item No.	A(mm)	B(mm)	C(mm)		D(mm)	Packing
			mm)	inch		
HT - 1/8R	9.5	9.6	3.2	1/8"	19.8	100PCS
HT - 3/16 R	9.6	9.6	4.8	3/16"	19.8	
HT - 1/4 R	12.0	10.0	6.35	1/4"	22.0	
HT - 5/16 R	12.0	10.0	7.9	5/16"	22.0	
HT - 3/8 R	12.5	12.0	9.5	3/8"	24.0	
HT - 1/2 R	15.2	12.0	12.7	1/2"	31.0	
HT - 5/8 R	18.2	12.0	15.8	5/8"	34.3	
HT - 3/4 R	18.2	12.0	19.4	3/4"	35.0	
HT - 1 R	22.0	12.0	25.4	1"	43.0	
HT - 17/16 R	24.0	12.0	27.5	17/16"	50.0	
HT - 5/4 R	26.2	12.0	31.8	1 1/4"	46.2	
HT - 3/2 R	30.0	12.0	36.7	1 1/2"	50.0	

## Ordering Information

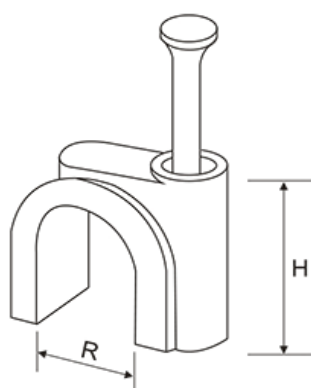
Order No	Model No	Product	Size
201 500	HT-4MM	Circle Cable Clips	4mm
201 501	HT-5MM	Circle Cable Clips	5mm
201 502	HT-6MM	Circle Cable Clips	6mm
201 503	HT-7MM	Circle Cable Clips	7mm
201 504	HT-8MM	Circle Cable Clips	8mm
201 505	HT-9MM	Circle Cable Clips	9mm
201 506	HT-10MM	Circle Cable Clips	10mm

## Technical Details

**Material:** PP, Steel nail.

**How to use:** Put the cable under the clip and hammer the nail into the wall to secure the cable.

**application:** Secuting of cables for general indoor wiring.



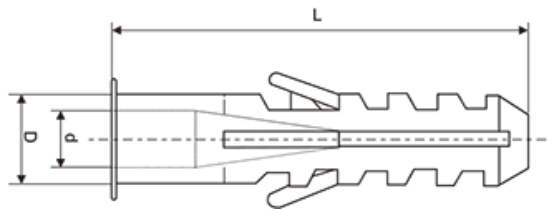
Item No.	MM	MM	MM
4mm	5.3	4	1.7 x 15
5mm	6.5	5	1.7 x 15
6mm	8.1	6	1.7 x 15
7mm	8.7	7	1.8 x 19
8mm	9.6	8	1.9 x 21
9mm	10.7	9	2.0 x 22
10mm	11.7	10	2.05 x 25

### Ordering Information

Order No	Model No	Product	Size	L (mm)	D (mm)	d (mm)
201 550	EN-06	Expand Nails	Size No.6	29.8	6	4.9
201 552	EN-08	Expand Nails	Size No.8	38.6	7.9	5.3
201 554	EN-10	Expand Nails	Size No.10	42.7	9.9	5.8
201 556	EN-12	Expand Nails	Size No.12	47.9	11.6	6.3

### Technical Details

Material : Made from PE  
 Colour : White



Item No.	L (mm)	D (mm)	D (mm)
EN - 06	6.5	5	1.7 x 15
EN - 08	8.7	7	1.8 x 19
EN - 10	9.6	8	1.9 x 21
EN - 12	10.7	9	2.0 x 22

## Ordering Information

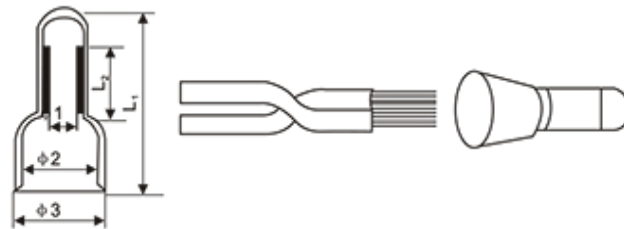
Order No	Model No	Product	Size
200 900	CEW-1	Close End Wire Connector	1.25mm <sup>2</sup>
200 901	CEW-2	Close End Wire Connector	2mm <sup>2</sup>

## Technical Details

Material : Silver-coated copper piece cover by UL. Appoved Nylon or PE.

How to use : put in the bare wire end into the cap and press wit clipper

Application: Wire joining.



Item No.	HT - Φ3	HT - Φ4	HT- Φ5	HT- Φ6	HT- Φ8
Φ1	3	3.15	3.66	4.66	5.7
Φ2	7.3	8	8.5	10	12.5
Φ3	9	9.75	10.5	12	14.7
L <sub>1</sub>	19.5	20.4	22.5	25.2	26
L <sub>2</sub>	6.5	6.5	7.5	7.8	8.8

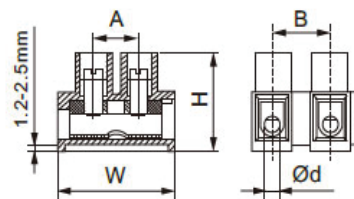
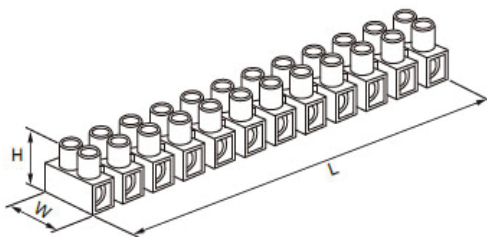
## Ordering Information

Order No	Model No	Product	Current	Cable Size	Size
208 760	H - 3	H Type Terminal Block	3A	2.5/4mm <sup>2</sup>	12 way
208 761	H - 6	H Type Terminal Block	6A	6mm <sup>2</sup>	12 way
208 762	H - 10	H Type Terminal Block	10A	10mm <sup>2</sup>	12 way
208 763	H - 15	H Type Terminal Block	15A	12mm <sup>2</sup>	12 way
208 764	H - 30	H Type Terminal Block	30A	16mm <sup>2</sup>	12 way
208 765	H - 60	H Type Terminal Block	60A	25mm <sup>2</sup>	12 way

## Technical Details

Material: insert : brass, others : PE,PP or PA  
 Color: Natural

- Max. Operating temperature: -5°C~+85°C for PE  
 -30°C~+110°C for PA
- Standards :EN60998-1 EN60998-2-1



Item No.	Rated current(A)	Section size (mm <sup>2</sup> )	L (mm)	W (mm)	H (mm)	A (mm)	B (mm)	Φd (mm)
H - 3	3	2.5/4	92	16	12.2	5.5	7.5	2.7
H - 6	6	6	119	17.3	13.9	6.5	8.2	3.3
H - 10	10	10	131	20.85	16.4	7.25	11.2	3.71
H - 15	15	12	135	22.65	18.25	8.25	11.5	4.2
H - 20	20	14	141.6	22.65	18.4	8.5	12.2	4.5
H - 30	30	16	165	24.1	21.1	9.5	14.1	5.5
H - 60	60	25	190	30.8	25.2	11.15	16.5	6.3

## Ordering Information

Order No	Model No	Product	Current	Cable Size	Size
224 820	TC-602	Terminal Block	14	60	600
224 821	TC-603	Terminal Block	14	60	600
224 822	TC-604	Terminal Block	14	60	600
224 823	TC-1002	Terminal Block	22	100	600
224 824	TC-1003	Terminal Block	22	100	600
224 825	TC-1004	Terminal Block	22	100	600
224 841	TB-1504	Terminal Block	0.5 - 1.5	15	600
224 851	TB -2512	Terminal Block	0.5 - 2.5	25	600
224 856	TB-4512	Terminal Block	0.5 - 4	45	600

## Technical Details

Item No.	Rated current / Voltage	Wire range
TC - 602	60A/600V	14mm <sup>2</sup>
TC - 603	60A/600V	14mm <sup>2</sup>
TC - 604	60A/600V	14mm <sup>2</sup>
TC - 1002	100A/600V	22mm <sup>2</sup>
TC - 1003	100A/600V	22mm <sup>2</sup>
TC - 1004	100A/600V	22mm <sup>2</sup>
TB - 1504	15A/600V	0.5-1.5mm <sup>2</sup>
TB - 2512	25A/600V	0.5-2.5mm <sup>2</sup>
TB - 4512	45A/600V	0.5-4mm <sup>2</sup>





TC - 602



TC - 1003



TB - 1504



TB - 2512




TB - 4512





# CUBIK

The Enclosure Company

## CUBIK ENGINEERING CO. PVT LTD

 370/1, Nawala Road, Rajagiriya, Sri Lanka.

 011 2 86 10 10 (Auto lines )

 011 2 86 40 40

 sales@cubik.lk

 www.cubik.lk